



SOCIAL ACTION FOR RURAL DEVELOPMENT

...illuminating Rural India



एफ०पी०ओं (FPO) के गठन एवं संवर्धन के लिए केंद्रीय क्षेत्र योजना अंतर्गत

बिरसा सेरीकल्चर प्रोड्यूसर कंपनी लिमिटेड

“ किसान जागरूकता अभियान ”

दिनांक -

स्थान -

प्रखण्ड - रजिया, खूँटी (झारखण्ड)

(CIN - U17299JH2021PTC016854)

हरासकू, ताम्बा, पोस्ट - रजिया, खूँटी, झारखण्ड (835227)

सहयोग: लघु कृषक कृषि व्यापार सम (एस० एफ० ए० सी०)

क्रियान्वन संस्था: सोशल एक्शन फॉर रूरल डेवलपमेंट (SARDA)

ANNUAL REPORT 2024-25



Contents

	Page No.
About SARDA	3
Our Organization.....	3
Statutory Compliance Information	3
From the Desk of Leadership.....	4
Governing Board Members	5
Organisational Structure	6
Our Core Team	7
Journey So far	8
Areas of Intervention	8
Mission and Vision statement	8
Aims & Objectives.....	8
Strategies Adopted	9
Our Core Competencies.....	9
Development Interventions.....	10
Organizational Workforce Strength	10
Outreach	11
Perspective Plan 2030.....	12
List of the Partners - Our Development Allies.....	13
Awards & Recognition.....	14
Our Empanelments : Government & Other Agency	14-15
Financial Year 2024-25: Key Figures & Trends	
✓ Our Support for Sustainable Development Goals	16-17
• List of Projects	17
✓ Our Contributions	18 - 25
• Natural Resource Managemen	
• Contribution Towards Community- Based Livelihood	
• Forest & Environment	
• CSR	
• Consultancy Services for Research Survey	
• Planning,Development & DPR Preparation	
SARDA's Initiatives.....	25-26
Media Coverage.....	27
Our Workplace Network	





ABOUT SARDA

Social Action for Rural Development (SARDA) is a registered NGO dedicated to advancing Sustainable Development Goals, especially in rural communities. For over two decades, it has pioneered innovative approaches, setting milestones in the development sector. Led by visionary management and a dynamic team, SARDA is widely recognized for its exemplary work. It supports various agencies—including government bodies, corporations, and NGOs—in implementing effective field actions. SARDA specializes in Holistic Village Development, Watershed Management, Sustainable Agriculture, Forest Restoration, Tribal Upliftment, Livelihood Promotion, Environmental Conservation, Women Empowerment, and Institutional Development. Committed to poverty eradication, SARDA drives result-oriented projects through strategic planning and resource mobilization.

OUR ORGANIZATION

Our Tag line	: ...illuminating Rural India
Legal Status	: Registered Under Societies Reg. Act XXI, 1860
Registration Number	: 135/2002-03 Dated: 28/02/2003 (Ranchi, Jharkhand)
Year of Establishment	: 2001
FCRA Registration No	: 337750085
EPF Number	: JHRAN0033419000
ISO 9001:2015 Cert. No.	: IAS/QMS/C18831
MCA Registration for undertaking CSR Activities	: CSR00002185
MSME Registration	: UDYAM-JH-19-0004056
Social Stock Exchange Registration	: NSESENPO0089

STATUTORY COMPLIANCE INFORMATION

PAN Number	: AADTS1984N
12AB Registration No	: AADTS1984N23PT01 - 12AB
Exemption U/S 80G Registration No	: AADTS1984N23PT02 - 80G
TAN Number	: RCHSO24006F
GST Number	: 20AADTS1984NIZ6

Registered Office:

SARDA Bhawan, Chhotki Murram, Ward No 05, Ramgarh Cantt., Dist.-Ramgarh, Pin-829122, Jharkhand





From the Desk of Leadership...

Dear Stakeholders,

It has always been a privilege to keep you informed that since 2003, SARDA has promoted sustainable development through collaboration, impacting communities, and contributing to society. We support UN SDGs via Integrated Watershed Management, climate-resilient agriculture, and Farmer Producer Organization (FPO) promotion, aligning with national priorities to foster economic growth, social inclusion, and environmental sustainability. Operating in 9 Indian states across 697 blocks in 114 districts, SARDA impacts over 2.5 lakh rural households. Our water resource management enhanced irrigation to 5,500 acres and restored 7,500 acres of wasteland. In Jammu, we're treating over 1,000 hectares with NABARD.

SARDA ensures clean water management in Jharkhand, Chhattisgarh, and Madhya Pradesh via the Jal Jeevan Mission, and has developed 70+ Water Security Plans in Maharashtra under ATAL Bhujal Yojana. Addressing agrarian distress, SARDA promotes climate-resilient agriculture and cost-effective cultivation, forming 53 FPOs across multiple states to boost farmer incomes.

In collaboration with Reliance Foundation, SARDA is strengthening climate resilience in 150 villages in Madhya Pradesh. Supported by Schaeffler India Limited, we promote clean cooking, distributing 8,300 Improved Cookstoves. Our bamboo agroforestry initiative spans four states, contributing to sustainable land use.

SARDA provides consultancy services to corporates and state departments, specializing in FPO business facilitation, implementation projects, forestry project evaluations, social impact studies, and project monitoring. These services were provided in FY24-25.

SARDA has emerged as a leader in developmental initiatives, partnering with the government, corporations, and international organizations. We present the 2024-25 Annual Report and express gratitude to our team, communities, partners, and stakeholders for their dedication in creating lasting change.

With warm regards,

Dr. Naresh Prasad Singh

Managing Director, SARDA



SARDA's GOVERNING BOARD

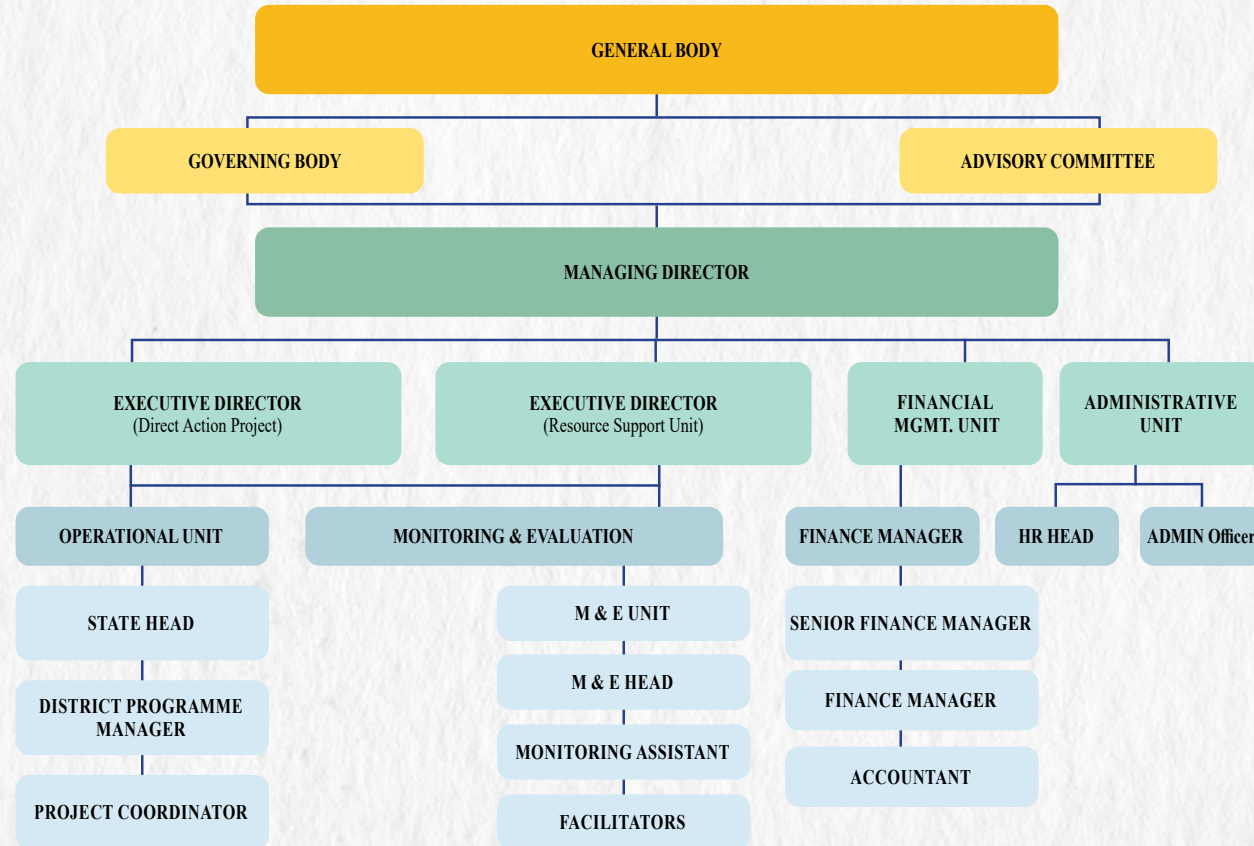
The Governing Board of SARDA comprises 07 members, including three office bearers. The list of members is as follows:

S. No	Name	Designation	Qualification	Date of Appointment	Profile
1	Dr. Ravi Shankar	Chairman	Doctorate in Horticulture	April, 2001	Independent Consultant, Having More than 30 years of experience in Horticulture Development, Climate Change Adaptation, and public policy analysis.
2	Mrs. Ragini Kumari	Vice Chairman	Bachelor in Engineering	April, 2017	Independent Consultant Engineer, Over 11 Years of experience as a Development Professional.
3	Mrs. Mamta Singh	Secretary	Masters in Chemistry	April, 2001	Independent Consultant and Founder Member of the Organization. Over 25 Years of Experience as a Development Professional with a Chemistry Background.
4	Mr. Binay Kumar	Treasurer	B. Sc Agri & PGDRM	April, 2001	Independent Consultant of the Organization. Over 26 Years of Experience as a Development Professional for Risk and Disaster Management with Rural Management
5	Mr. Gaurav Kr. Panda	Member	M.Sc. (GIS & Remote Sensing)	July, 2021	Having 12 Years of Expertise in GIS & Remote Sensing work, Watershed, Other implementation, and Liasoning of Direct Action Projects within the Operational States of SARDA
6	Mrs. Priyambda Singh	Member	Master's in Biotechnology	June, 2023	Development Professional specialized in documentation, proposal Writing, and Data Analytics, Expertise in activities related to Biotechnology concerns.
7	Mrs. Savitri Panchale	Member	Graduate with Arts	June, 2024	Associated with SARDA since 2012 and an Office bearer. Having 15 years of experience as a development Professional specializing in Community Mobilization, Data Compilation, Report Drafting, Training, & Capacity Building of the Local Community





ORGANISATIONAL STRUCTURAL-ORGANOGRAM





SARDA's CORE TEAM

S. No	Name	Qualification	Expertise	Designation	With SARDA
1.	Mr. Shishir Kumar	MBA-RD (XIIS)	Rural Development	Executive Director -Resource Support Unit	2016
2.	Mr. Amresh Bihari Jha	MSC in Botany	Rural Development & Forestry	Executive Director - Direct Action Project	2010
3.	Mr. Gaurav Kumar Panda	MSC in Geo-informatics and Remote Sensing	Rural Development & GIS	State Head-JH	2013
4.	Mr. Ripusudan Kumar	Master's in Rural Management	Rural Development & Forestry	Forestry Head-RSU	2011
5.	Mrs. Sneha Sinha	M.Com + MBA (HR & Finance) + HRBP Certified	HR & Administration	Senior HR Manager and PS To MD	2017
6.	Mr. Manoj Kumar	MBA & ICWAI	Finance & Accounts	Chief Finance Officer and PS To MD	2017
7.	Mr. Arjun Singh	Master's in Rural Management	Natural Resource Management	NRM Expert and PS To MD	2007
8.	Mr. Bhupesh Bhawankule	Bachelor's in Agricultural Science	Rural Development	Agriculture Expert	2022
9.	Mr. Yuvraj Wadhai	Bachelors of Commerce	Finance & Accounts	Senior Accountant	2006
10.	Mrs. Palak Jain	Bachelors of Commerce	Finance & Accounts	Finance Manager	2022





Journey so far.



For over two decades, SARDA has been instrumental in alleviating poverty and hunger through community development, sustainable agriculture, integrated development, alternative income generation, and village management. These efforts have significantly contributed to a more sustainable and prosperous future for vulnerable communities.

Climate change, water scarcity, and unsustainable resource use threaten the livelihoods of rural communities, especially impoverished farmers, underscoring the need to address food and financial security. Empowering communities to access their rights and resources requires acknowledging and rectifying unequal opportunities and resource distribution. Collaborative efforts with stakeholders are essential for creating a more equitable and sustainable future.

SARDA's Direct Implementation Project for Watershed Promotion has expanded to 25,000 hectares, including an additional 4,000 hectares. This expansion has enabled irrigation on 5,500 acres and restored 7,500 acres of wasteland.

SARDA has supported over 150,000 rural families by enhancing traditional skills and fostering new livelihood opportunities. It has successfully promoted 25,000 women's Self-Help Groups (SHGs) that have empowered women to overcome poverty and live with dignity. Additionally, SARDA's 53 Farmer Producer Organizations (FPOs) provide platforms for 40,000 farmers to own their production, manage their supply chain, and share profits. SARDA also contributes significantly to government community welfare initiatives through various anti-poverty programs. SARDA remains committed to conserving and utilizing local resources to achieve ecological balance and build sustainable livelihoods.

Areas of Intervention

S. No	State	Districts
1.	Jharkhand	All 24 Districts
2.	Bihar	Nalanda, Jamui, Gaya, Aurangabad
3.	Maharashtra	Gondia, Bhandara, Gadchiroli, Chandrapur, Nagpur, Jalgaon, Amravati, Parbhani, Yavatmal and Palghar.
4.	Madhya Pradesh	All 55 Districts
5.	Chhattisgarh	All 27 Districts
6.	Odisha	Jharsuguda, Angul, Sundargarh, Bhubaneswar, Bhadrak, Kendrapada, Nabarangpur, Mayurbhanj, Jagatsinghpur & Dhenkenal
7.	Uttar Pradesh	Ghazipur, Mirzapur, Chandauli, Sant Kabir Nagar, Gorakhpur, Gonda, Firozabad and Pratapgarh
8.	Jammu & Kashmir	Kathua and Reasi
9.	West Bengal	Paschim Bardman and South 24 Parganas

VISION

To support Sustainable Development Goals within our operational areas.

MISSION:

Alleviating rural poverty through sustainable, integrated development by empowering rural Indian communities via partnership and comprehensive village management, fostering ownership, initiative, and innovation.

AIMS AND OBJECTIVES:

SARDA strives for comprehensive village development through:

- ◆ Empowering men and women via self-help groups and employment opportunities.
- ◆ Providing technical and social support for sustainable management of natural resources (land, water, forests, animals, agriculture, horticulture) and promoting cottage industries.
- ◆ Developing infrastructure: roads, housing, hospitals, schools, community halls, and marketing facilities.
- ◆ Training in microfinance and entrepreneurship.
- ◆ Establishing educational and vocational institutions for human resource development.

- ◆ Facilitating scientific advancement and integration of villages into the wider world.
- ◆ Organizing women and marginalized tribal communities for constructive development.
- ◆ Combating alcoholism, drug addiction, and superstition through social awareness programs.
- ◆ Strengthening the connection between the government and rural populations by promoting government initiatives.
- ◆ Fostering an environment of equality and fraternity.



Strategies Adopted:

We aim to achieve our goals by:

- ◆ Empowering rural communities through Village-Level Organizations that identify, analyze, and plan development activities through participatory approaches.
- ◆ Implementing participatory Natural Resource Management Programs
- ◆ Establishing linkages between government organizations (GOs), non-governmental organizations (NGOs), and villagers.
- ◆ Creating a system for village-level organizations to hold monthly meetings and transform challenges into opportunities.



Our Core Competencies





DEVELOPMENT INTERVENTIONS

ORGANIZATIONAL FUNCTIONAL UNITS

SARDA follows a Functional Organizational Structure where each Functional Unit handles different aspects of projects and services



PROJECT EXECUTION UNITS

Moreover, the operational unit is responsible for the execution of awarded assignments to SARDA, and accomplishes its task under three different functional Units:

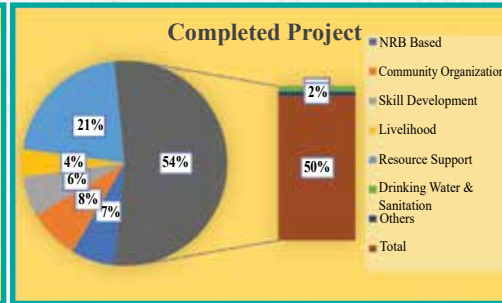
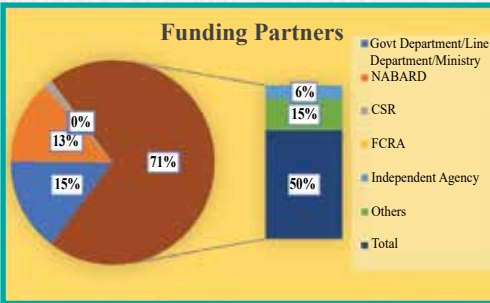
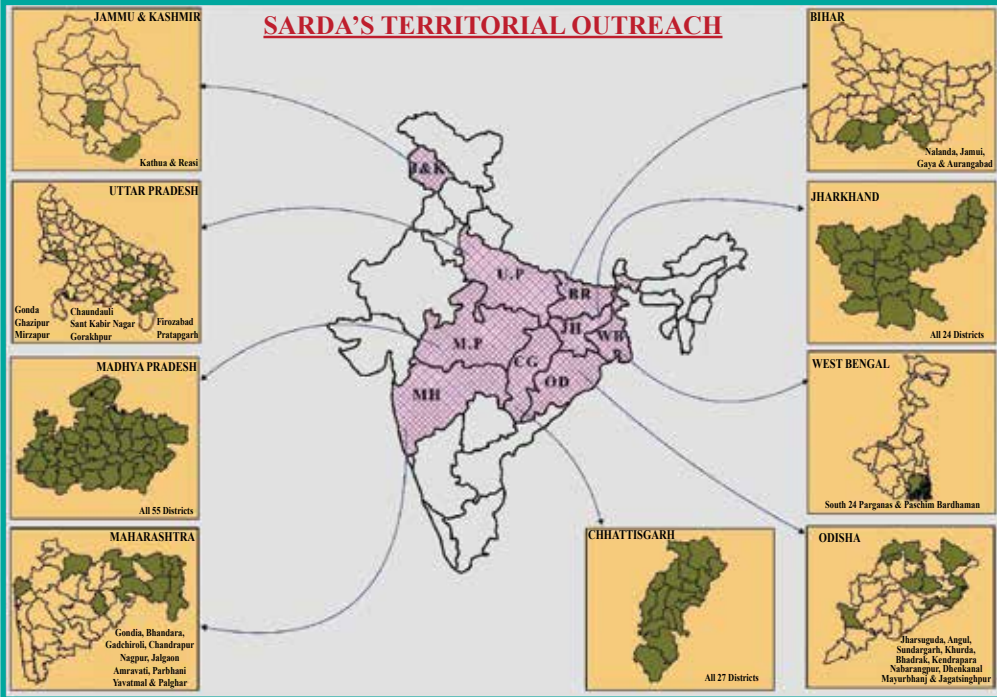


ORGANIZATIONAL WORKFORCE STRENGTH

S. N	CATEGORY	FULL TIME	PART-TIME	TOTAL NO.
1	Agri/ Forestry Expert	12	23	35
2	CA/ Financial Advisor	4	02	6
3	Finance Executive/ Accountant	06	10	16
4	Civil	8	02	10
5	GIS Expert	5	0	5
6	Social Expert	24	00	24
7	Supervisor	28	08	36
8	Volunteer	00	58	58
9	Field-level Staff	53	23	76
10	Administrative Staff	08	06	14
	Total	115	154	280



SARDA OUTREACH





SARDA: ADVANCING SUSTAINABLE RURAL DEVELOPMENT – TOWARDS THE PERSPECTIVE PLAN 2030

It has always been a privilege to share our journey of impact and transformation. Since 2003, Social Action for Rural Development (SARDA) has been at the forefront of promoting sustainable and inclusive development across India. Our mission is rooted in collaboration, innovation, and community empowerment, enabling lasting change at the grassroots level.

Our Impact and Commitment

Operating across 9 Indian states, 697 blocks, and 114 districts, SARDA has directly impacted more than 2.5 lakh rural households through integrated, scalable interventions. We align our efforts with national development priorities and the United Nations Sustainable Development Goals (UN SDGs)—focusing on economic growth, social inclusion, and environmental sustainability.

Key Initiatives Driving Perspective Plan 2030

- ◆ **Integrated Watershed Management:** We have enhanced irrigation across 5,500 acres and restored 7,500 acres of wastelands, increasing agricultural productivity and community resilience.
- ◆ **Water Resource Governance:**
 - ❖ In Jammu, we are currently treating over 3,500 hectares with the support of NABARD.
 - ❖ Under the Jal Jeevan Mission, we ensure a clean water supply across Jharkhand, Chhattisgarh, and Madhya Pradesh.
 - ❖ In Maharashtra, we developed over 70 Water Security Plans under the ATAL Bhujal Yojana. **Climate-Resilient Agriculture:** To address agrarian distress, SARDA promotes low-cost, climate-adaptive farming techniques. Through the formation of 53 Farmer Producer Organizations (FPOs) across multiple states, we strengthen market linkages and enhance farmer incomes.
- ◆ **Public-Private Partnerships:**
 - ❖ In collaboration with the Reliance Foundation, SARDA is building climate resilience across 150 villages in Madhya Pradesh.
 - ❖ With support from Schaeffler India Limited, we are advancing clean energy adoption by distributing 8,300 Improved Cookstoves, improving health outcomes, and reducing carbon emissions.

- ❖ In strategic partnership with **Equilibrium Private Limited**, we are implementing a **Climate Restoration and Resilience Project** across targeted regions of **Madhya Pradesh, Chhattisgarh, Jharkhand, and Maharashtra**.

The project envisions the **restoration of 6,000 hectares of degraded wasteland** through **phased afforestation and reforestation** interventions, contributing significantly to India's climate commitments and sustainable rural development.

The **first phase**, initiated in **Balaghat (Madhya Pradesh)**, covers **140 hectares** and introduces a **bamboo-based agroforestry model**. This integrated model combines:

- **Horticulture species**
- **Timber and fodder varieties**
- **Medicinal plants**
- **Climate-resilient intercrops**





*This holistic approach not only **enhances carbon sequestration** in both vegetation and soil but also **revitalizes rural livelihoods** through **sustainable and economically viable land-use practices**.*

*Through this initiative, SARDA is setting a replicable model for large-scale climate adaptation—one that aligns with the **UN SDGs, National Afforestation Goals**, and our long-term **Vision 2030** of fostering **ecological regeneration and community resilience**.*

Looking Ahead: Vision 2030

SARDA is poised to scale its efforts under the Perspective Plan 2030, with a renewed focus on:

- ◆ **Technology-enabled development**
- ◆ **Data-driven decision-making**
- ◆ **Gender-inclusive programs**
- ◆ **Carbon-neutral rural ecosystems**

We reaffirm our commitment to building resilient rural economies, fostering innovation, and deepening partnerships with the government, corporations, and international organizations.

As we present our Annual Report 2024–25, we extend heartfelt gratitude to our dedicated team members, community champions, partners, and stakeholders. Your continued trust and collaboration drive our mission forward—toward a sustainable and equitable future for all.



OUR DEVELOPMENT ALLIES

- ◆ NABARD RO Lucknow (UP), Ranchi (JH), Pune (MS), Bhopal (MP), Patna (BR), Jammu (J&K)
- ◆ District Administration of different districts of Jharkhand, Bihar, MP, Maharashtra, Odisha and Chhattisgarh
- ◆ Forest Department of Jharkhand, Bihar, MP, Maharashtra and Chhattisgarh.
- ◆ State Level Nodal Agency Jharkhand, Maharashtra
- ◆ Bihar Watershed Development Agency, Bihar
- ◆ Jharkhand State Livelihood Promotion Society, Ranchi, Jharkhand
- ◆ Department of Rural Development-Jharkhand, Bihar, MP and Maharashtra
- ◆ District Water and Sanitation Society (Gondia, Nagpur, Balaghat, Korba, Simdega)
- ◆ Power Finance Corporation Consulting Limited (PFCCCL)
- ◆ Jindal Steel Power Limited
- ◆ Central Mine Planning and Design Institute Ranchi, Bilaspur, Dhanbad, Asansol, Nagpur, Bhubaneswar, Singrauli
- ◆ National Thermal Power Corporation
- ◆ Punjab National Bank
- ◆ Development Commissioner (Handicrafts), Ministry of Textiles, Govt. of India
- ◆ Urban Local Body: Dhanbad, Ranchi, Khunti, Jamshedpur, Adityapur, Mango, Saraikela & Chaibasa
- ◆ TERI University
- ◆ Jharkhand State Scheduled Caste Cooperative Development Corporation, Ranchi
- ◆ Jharkhand State Tribal Cooperative Development Corporation, Ranchi
- ◆ Oil and Natural Gas Corporation
- ◆ ADANI Foundation
- ◆ Reliance Foundation
- ◆ Directorate of Statistics and Economics, Government of Maharashtra
- ◆ District Mineral Fund Trust, Korba- Chhattisgarh
- ◆ MP State Rural Livelihood Mission, Govt. of Madhya Pradesh
- ◆ Revenue & Land Reforms Department, Govt. of Jharkhand



- ◆ Land Acquisition Department of all Districts of Jharkhand
- ◆ Bihar Skill Development Mission, Govt. of Bihar
- ◆ NABFINS
- ◆ Western Coalfield Limited
- ◆ MECON Limited.
- ◆ Lal Bahadur Shastri National Academy of Administration, Mussoorie.
- ◆ Mahanadi Coalfields Limited
- ◆ Ministry of Water Resources, River Development and Ganga Rejuvenation, GoI.
- ◆ CSIR –NEERI, Nagpur
- ◆ Ministry of Jal Shakti
- ◆ Vidarbha Development Board, Nagpur
- ◆ District Mineral Fund, Sundergarh, Odisha
- ◆ SFAC, Government of India
- ◆ NDDDB, Govt. of India
- ◆ ATAL BHUJAL YOJANA, Maharashtra
- ◆ Jal Jeevan Mission
- ◆ NABCONS
- ◆ SBI General Insurance
- ◆ National Dairy Development Corporation
- ◆ Nabakrushna Chaudhary Centre for Development Studies (NCDS)
- ◆ Uttar Pradesh Cooperative Federation Limited (UP – PCF)
 - ◆ Sachaeffler India Private Limited
 - ◆ Equilibrium

OUR AWARDS & RECOGNITION:

- ◆ SARDA is an ISO 9001:2015 certified Organization for its Quality Management System and has continuously received appreciation for its commendable work. SARDA has been recently awarded for:
 - a) Zee Business National CSR Leadership.
 - b) Certificate of Merit at 8th Edition of World CSR Day.
 - c) Outstanding performance in the development sector by Global Achievers Foundation.
 - d) Best NGO working for Soil & Water conservation and Management in Jharkhand by CSR World Day.
 - e) Promotion of the Best JLG & Best SHG in Bihar for 2014-15 by NABARD RO Patna.

OUR EMPANELMENTS : GOVERNMENT & OTHER AGENCY

SARDA is officially empaneled with various State and National-level agencies, recognized for its proven competency, domain expertise, and credible track record across multiple development sectors. Our empanelment includes:

S. No.	Name of the Agency/ Department	Purpose	Area of Validation
1	CSIR-NEERI under Jagruti Programme	Water Literacy Programme and Science for Women Empowerment at Gram Panchayat	PAN India
2	Mazagaon Dock Shipbuilders Limited, Mumbai	Impact Assessment of CSR Projects of MDL	PAN India
3	Development Commissioner (Handicrafts), Ministry of Textiles, GOI	As a technical Service provider for capacity building to Artisans	PAN India
4	National Water Mission (NWM)	Zone 2B	PAN India
5	Small Farmers Agribusiness Consortium (SFAC)	Promotion of Farmer Producers Organisations (FPOs)	PAN India
6	Rural Development Department (Panchayati Raj), Govt. Of Jharkhand	For carrying out Capacity Building & other relevant works for Panchayati Raj	Jharkhand
7	Revenue and Land Reforms Department, Govt. Of Jharkhand	For carrying out the Social Impact Assessment of Land Acquisition in Jharkhand	Jharkhand
8	NABCONS	Consulting Agency	Jharkhand
9	PFC Consulting Limited	For conducting Socio Economic Studies/ Social Impact Assessment/ Corporate Social Responsibility Plans/ Resettlement & Rehabilitation Plans, Studies related to Forest and for Forest Clearances, Conducting Public Hearing, Survey and Land acquisition and SIA study for Coal Blocks.	PAN India
10	Department of Rural Development, National Level Monitoring Division, Govt. of India	Institutional NLM Selected for Rural Development Schemes	Western Region, East and North -East Region of India
10	Jharkhand Biodiversity Council/ Board	Capacity Building for BMC members in Simdega & Ramgarh districts Preparation of People's Biodiversity Register & BMC formation- East Singhbhum & Simdega	Jharkhand Jharkhand



S. No.	Name of the Agency/ Department	Purpose	Area of Validation
11	National Highway Authority of India (NHAI)	Plantation along Highways	Jharkhand
12	Central Mine Planning & Design Institute Limited (CMPDI)	Environment Impact Assessment / Enterprise Performance Management Services	Jharkhand
13	Agriculture, Animal Husbandry & Cooperative Dept.	Krishak Pathshala Scheme	Jharkhand
14	Urban Development & Housing Department, Govt. of Jharkhand	As a Resource organisation for carrying out different interventions in Jharkhand	Jharkhand
15	HIPA-FAIRLAWNS, Shimla, Himachal Pradesh	Carrying out Social Impact Assessment (SIA)	Himachal Pradesh
16	JAL JEEVAN MISSION, Maharashtra	Implementation support agency	Maharashtra
17	DIRD Pune	Carrying out Capacity Building & Institutional Strengthening of WUAs in Maharashtra for 60 months	Maharashtra
18	SBI Foundation	Baseline, Midline, Endline Assessment	PAN India
19	CMJSAY, Soil & Water Conservation Dept, Maharashtra Govt.	Evaluation	Maharashtra
20	NCDC	Promotion of FPOs	Maharashtra
21	Maharashtra Village Social Transformation Foundation (VSTF)	Village Planning	Maharashtra
22	Vidarbha Irrigation Development Corporation, Govt. of Maharashtra	Consultancy Services for the project under PMKSY for the Formation and Capacity Building of the Water User Association	Maharashtra
23	Ministry of Rural Development, GOI, as PIA for the Implementation of the SVEP Programme	Implementing agency	Maharashtra
24	Directorate of Economics and Statistics (DES) Govt. Of Maharashtra	For conducting Evaluation Studies, sample surveys and providing Expert Services in Economic and Statistical activities of the government. Of Maharashtra	Maharashtra

S. No.	Name of the Agency/ Department	Purpose	Area of Validation
25	YASHADA, Pune	For Monitoring & Evaluation	Maharashtra
26	Chhattisgarh Biodiversity Board, Govt. Of Chhattisgarh	For Biodiversity Conservation Initiatives in Chhattisgarh	Chhattisgarh
27	Forest Department, Kanker, Chhattisgarh	For Training and Capacity Building, and preparation and implementation of Livelihood-based DPR of villages of Kanker Forest Division	Chhattisgarh
28	Bihar State Biodiversity Council, Patna	Formation of BMC & preparation of PBR	Bihar
29	Bihar Watershed Development Society, Govt. Of Bihar (BWDS)	For training and capacity building of Watershed Projects	Bihar
30	Bihar Skill Development Mission	For Providing Skill Training at Bihar Skill Development Centers	Bihar
31	NCDC	Promotion of (FPOs)	Madhya Pradesh
32	Nal Jal Yojana, Health Engineering Dept, MP Corporation Limited (Under Jal Jeevan Mission)	Implementation Support Agency (ISA)	Madhya Pradesh
33	Atal Bihari Vajpayee Institute of Good Governance and Policy Analysis	For Market Research & Survey Agencies for Data collection (Qualitative & Quantitative) in Madhya Pradesh for studies taken up by ABVIGGPA, Bhopal	Madhya Pradesh
34	MP Day State Rural Livelihood Mission, Govt. of M.P	Implementing Agency/ Initial Rural Entrepreneurship Programme	Madhya Pradesh
35	Odisha Biodiversity Board	BMC & PBR & Other Allied activities-reg.	Odisha
36	NCDS Odisha	For carrying out the Social Impact Assessment of Land Acquisition in Odisha	Odisha





FINANCIAL YEAR 2024-25: KEY FIGURES & TRENDS

OUR SUPPORT FOR SUSTAINABLE DEVELOPMENT GOALS WITH DIRECT ACTION PROJECTS

SDG-1, SDG-2 & SDG -8	No Poverty, Zero Hunger, Decent Work and Economic Growth	Sl.	Name of the Project	Area of Operation
		1	SFAC (2020 - 21) - FPO Promotion & Formation under CSS	Jharkhand
2	SFAC (2021 - 22) FPO Promotion & Formation under CSS	Jharkhand, Bihar & Uttar Pradesh		
3	SFAC (2022 - 23) FPO Promotion & Formation under CSS	Bihar		
4	NDDB (2022 - 23) FPO Promotion & Formation under CSS	Jharkhand - Bokaro		
5	NDDB BSF	Jharkhand - Hazaribagh		
6	Birsa Krishak Pathshala	Jharkhand - Ramgarh		
7	NCDC (2022 - 23) FPO Promotion & Formation under CSS	Madhya Pradesh - Panna		
8	UP PCF (2022 - 23) FPO Promotion & Formation under CSS	UP - Sant Kabir Nagar		
9	SFAC (2023 - 24) FPO Promotion & Formation under CSS	UP - Gonda, Pratapgarh & Firozabad		
10	NABARD FFPO Chatra	Jharkhand Chatra		
11	Honey Bee Training	Jharkhand - Bokaro		
12	FSPF- Mardah	UP - Gazipur		
13	FSPF- Jakhania	UP - Gazipur		
14	WDF- Jogernala	UP - Mirzapur		
15	FPO- Deori under CBBO Fund	Maharashtra - Deori, Gondia		
16	FPO- Salekasa under CBBO Fund	Maharashtra - Salekasa, Gondia		
17	FPO- Goregaon under CBBO Fund	Maharashtra - Goregaon, Gondia		
18	FPO- Deori under PODF Fund	Maharashtra - Deori, Gondia		
19	FPO- Arjuni Morgaon under PODF Fund	Maharashtra - Arjuni Morgaon, Gondia		
20	FPO- Armori under PODF Fund	Maharashtra - Armori, Gadchiroli		
21	FPO- Wadsa under PODF Fund	Maharashtra - Wadsa, Gadchiroli		
22	SLWM- ZP Gondia	Maharashtra - Gondia		
23	SLWM- ZP Nagpur	Maharashtra - Nagpur		
24	WDF-Sukhalkhad	J & K - Jammu		
25	SDP- Rural Tourism	J & K - Jammu		
26	WDF-Talain	J & K - Jammu		
27	WDF- Hatli Sawla Springshed	J & K - Reasi		
28	WDF-Kothian -CBP	J & K - Reasi		
29	CAT	J & K - Jammu		
30	FPO- Kirnapur under PODF Fund	MP - Kirnapur, Balaghat		
31	FPO- Lanji under PODF Fund	MP - Lanji, Balaghat		
32	FPO- Lalbarra under CBBO Fund	MP - Lalbarra, Balaghat		
33	FPO- Bijadandi under CBBO Fund	MP - Bijadandi, Mandla		
34	FPO- Mawai under CBBO Fund	MP - Mawai, Mandla		
35	CFP-Jharkhand	Chatra, Khunti & Jamtara		
36	CFT- Project Lanji block	MP - Lanji, Balaghat		
37	CFT- Project Kirnapur block	MP - Kirnapur, Balaghat		



SDG 5	Gender Equality	S. No	Name of the Project	Area of Operation
		38	LEDP Project (Vegetable Value Addition)	MP - Lanji, Balaghat
		39	FSPF- Kodo-Kutaki Millets Project	MP - Bijadandi, Mandla
		40	FSPF- Kodo-Kutaki Millets Project	MP - Mawai, Mandla
		41	LEDP-Project Kodo-Kutaki Millets	MP - Bijadandi, Mandla
		42	LEDP-Project Kodo-Kutaki Millets	MP - Mawai, Mandla
		43	LEDP Project (Vegetable Value Addition)	MP - Lanji, Balaghat
		44	FSPF- Kodo-Kutaki Millets Project	MP - Bijadandi, Mandla
SDG 6	Clean Water and Sanitation	S. No	Name of the Project	Area of Operation
		45	Atal Bhujal Yojana-GSDA-Amravati	Maharashtra - Warud, Amravati
		46	Jal Jeevan Mission	Maharashtra - Balaghat
		47	Jal Jeevan Mission	Jharkhand - Simdega
		48	Jal Jeevan Mission	CG - Korba
		49	SLWM- ZP Gondia	Maharashtra - Gondia
		50	SLWM- ZP Nagpur	Maharashtra - Nagpur
SDG 7	Affordable and Clean Energy	S. No	Name of the Project	Area of Operation
		51	Swasthya Jyoti: Unnat Chulhe, Shashakt Mahilaaye	MP - Chhattarpur
S D G 13	Climate Action	S.No	Name of the Project	Area of Operation
		52	SWIFT GREEN (Agro Forestry) Project for Tribal Farmers	MP - Balaghat
		53	Plan Scheme Evaluation	All 50 Forest divisions of JH
		54	CAMPA Evaluation MP II	3 Group (43 Forest Division of MP)
		55	CAMPA Evaluation MP III	All 5 Groups for FY 2023-24
		56	Odisha Biodiversity Board	25 GP Under Satkosia WL-Nayagarh & Boudh District, Orissa





OUR CONTRIBUTIONS

➤ NATURAL RESOURCE MANAGEMENT

1. **Watershed Development Projects** : The implementation of Watershed Development Projects in Uttar Pradesh, Jharkhand, and Jammu & Kashmir has led to improved soil and water conservation, increased agricultural productivity, enhanced livelihoods for small and marginal farmers, and strengthened community participation through Village Watershed Committees (VWCs). These projects have also promoted sustainable resource management and built long-term local capacity.

In 2024–25, SARDA treated 1136.50 Ha of land across 30 villages in 25 panchayats (9 blocks), benefiting over 4,000 families.

Villagers now actively manage water use, and farmers have adopted modern practices in water and soil management. Infrastructure like ponds and farm bunds was developed to enhance rainwater harvesting. Additionally, Goatery, dairy, and stitching units provided income opportunities for landless families.

2. **Jal Jeevan Mission (JJM)** aims to provide safe, adequate tap water to all rural households by 2024, with a focus on source sustainability, water conservation, and community participation to create a *Jan Andolan* for water.

SARDA is implementing JJM in 472 villages across Madhya Pradesh, Chhattisgarh, and Jharkhand, covering 276 panchayats in Balaghat (MP) and 48 in Simdega (JH), benefiting over 22,544 households. Acting as a technical secretariat, SARDA facilitates grassroots implementation by mobilizing CBOs and building the capacity of Gram Panchayats.

The initiative ensures access to reliable drinking water, significantly improving health, reducing the burden on women and girls, and enhancing rural livelihoods and well-being.

3. **THE FARM SECTOR PROMOTION FUND (FSPF)** Project is transforming the lives of 200 small and marginal farmers in the Mardah and Jakhania Blocks of Ghazipur

district (Uttar Pradesh) and the Mawai and Bijadandi Blocks of Mandla district (Madhya Pradesh). By promoting millet cultivation at the pilot stage, introducing silage production, and supporting millet-based value addition, each beneficiary family has cultivated 0.5 acres of previously low-productive land under the proposed millet model.

The initiative has demonstrated the potential to increase annual household income by over ₹55,000 by reducing agricultural input costs and utilizing underused land more effectively. Structured around six strategic pillars—Climate, Water, Carbon, Nutrient, Energy, and Knowledge—the project integrates a range of technological solutions tailored to the principles of Smart Farming. These pillars enable context-specific interventions aimed at strengthening farmers' adaptive capacities. At its core, the project is designed to build climate resilience in agriculture by promoting sustainable, climate-smart practices that ensure long-term livelihood security.

4. **ATAL BHUJAL YOJANA (ATAL JAL)** is a community-driven groundwater management initiative aimed at promoting sustainable water practices. **SARDA is implementing the program in Warud and Morshi blocks of Amravati, Maharashtra**, supporting Gram Panchayats and DPMUs in data sharing, IEC activities, stakeholder capacity building, and preparation of Village Water Security Plans (WSPs).

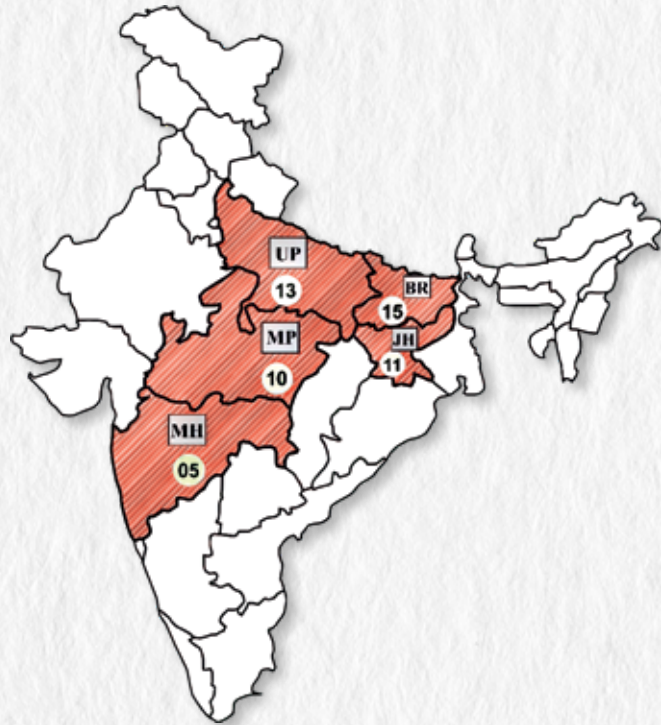
Key Achievements:

- Covered **48 GPs and 107 villages**, reaching over **9,600 beneficiaries**
- Conducted **IEC activities**: Gram Sabhas, Mahila Sabhas, campaigns, competitions, and workshops
- Facilitated **Agri-based interventions**: Farmer and Millet camps, case studies, and seed distribution
- Carried out **WCS activities**: Drainage surveys, recharge shaft selection, and WSP updates
- Executed **GWS activities**: Well inventory, surveys via the Atal Jal mobile app, and preparation of estimates
- The project promotes efficient water use and strengthens grassroots-level water governance

➤ COMMUNITY BASED LIVELIHOOD PRODUCTION & ENHANCEMENT

1. Aligned with the goals of No Poverty and Decent Work & Economic Growth, SARDA has promoted **53 Farmer Producer Organizations (FPOs)** across Jharkhand, Bihar, Madhya Pradesh, Uttar Pradesh, and Maharashtra under the Central Sector Scheme as a CBBO and PODF-ID of NABARD. These FPOs aim to enhance farmer incomes through collective production, procurement, and business activities in agriculture and allied sectors.

STATEWISE FPO'S PROMOTED BY SARDA



SARDA, as a CBBO, has promoted **53 Farmer Producer Organizations (FPOs)** across Jharkhand, Bihar, MP, UP, and Maharashtra, mobilizing over 2 lakh farmers and registering 25,000 as shareholders. The FPOs have a combined authorized capital of ₹220 lakh, mobilized share



capital of ₹300 lakh, and annual turnovers ranging from ₹12–87 lakh, with all operating profitably. Over ₹120 lakh has been secured through equity grants.

SARDA supports the entire agri-value chain, ensuring sustainable market linkages. It has helped launch 30 branded products and secured GI tags for select items like Chinnor Rice. FPOs have showcased their products at national platforms such as the Aadi Mahotsav in New Delhi.

2. SARDA, in collaboration with the Rural Development Department, Jharkhand, is implementing the MNREGS–DAY–NRLM Cluster Facilitation Project (CFP) to address poverty in aspirational districts through program convergence and grassroots capacity building. The initiative spans 359 villages in 48 panchayats across Simariya, Fatehpur, and Torpa blocks (Chatra, Jamtara & Khunti), benefiting 29,303 individuals.

Key Outcomes:

- 78 model DPRs prepared
- Birsa Harit Gram Yojana implemented on 125 acres across 3 districts
- 120 Gram Sabhas and 180 SHG meetings conducted for awareness
- Capacity building of Bagwani Sakhi, Mitra & Mates
- 144 Rojgar Diwas organized
- Beneficiary selection under the Abhua Awas Yojana completed
- SVEEP voter awareness campaigns conducted in all target blocks
- SARDA also acts as the technical secretariat to Gram Panchayats, ensuring effective program implementation and coordination.





- 45 SHGs trained and linked to livelihood activities
- 300 beneficiaries trained in productivity, processing, and value addition of Kodo-Kutki
- SHGs received seeds, technical support, and continuous handholding
- A Millet Processing Unit was established for Mawai LEDP beneficiaries

2. MICRO ENTERPRISE DEVELOPMENT PROGRAMME (MEDP) – Basholi, Kathua (J&K)

Implemented by SARDA with NABARD's support, the MEDP in Basholi empowers women entrepreneurs through skill training and field exposure. Trainees showcased strong motivation and technical ability, launching successful small businesses, especially in jute bag production.

Their products are gaining market traction across the region, from Nagrota to Pinther, earning active members ₹3,000–5,000 monthly. The initiative has attracted support from NABARD, RSETI Kathua, and the local administration, contributing to sustainable economic growth in the region.



3. BIHAR SKILL DEVELOPMENT MISSION (BSDM) aims to enhance youth employability by offering industry-aligned training, particularly in high-demand sectors like IT and CS, through its *Kushal Yuva Program*.

SARDA manages the BSDC at Giddhaur block, Jamui, covering 40 villages across 8 panchayats. In FY 2024–25, 244 youth were trained—most secured employment, while others pursued higher education.

4. PRI TRAINING, DEPARTMENT OF PANCHAYATI RAJ, Govt. of Jharkhand.

With the support of the Panchayati Raj Department, Government of Jharkhand, SARDA is conducting training for PRI members to enhance their capacity and skills by organizing training sessions, workshops, and skill-building activities. In FY 2023-24, SARDA has trained 1396 PRI members in the 6 blocks of Jamtara District of Jharkhand

5. SARDA in support of NATIONAL DAIRY DEVELOPMENT BOARD (NDDB), Jharkhand provided Inhouse Training cum Capacity Building and Exposure Visit of Honey Bee Practicing Farmers in the Nawadih Area of Bokaro, Jharkhand. A total of 26 Farmers from 8 GP benefited.

➤ **CLIMATE, FOREST & ENVIRONMENT**

1. SWIFT GREEN (Agro Forestry) Project for Tribal Farmers, Balaghat, MP

SARDA, in partnership with **Equilibrium Pvt. Limited** is implementing a **Climate Restoration and Resilience Project** across select regions in **Madhya Pradesh, Chhattisgarh, Jharkhand, and Maharashtra**. The initiative aims to **restore 6,000 hectares of degraded wasteland** through **phased afforestation and reforestation interventions**.

The **first phase**, covering **140 hectares in Balaghat, Madhya Pradesh**, adopts a **bamboo-based agroforestry model**, integrating **horticulture trees, timber, fodder, medicinal plants, and suitable intercropping species**. This approach is designed to **enhance carbon sequestration** in vegetation and soil while **uplifting community livelihoods** through sustainable land-use practices.

2. SWASTHYA JYOTI: UNNAT CHULHE, SHASHAKT MAHILAAYE

SARDA, in collaboration with **Schaeffler India**, has been actively supporting the **Improved Cookstove (ICS) Distribution Project** in **Madhya Pradesh**, aimed at enhancing energy efficiency in rural households.

- **Direct Beneficiaries:** The initiative provided **8,300 households** with improved cookstoves, positively affecting approximately **41,500 individuals**. These energy-efficient stoves reduced exposure to harmful smoke, improving respiratory health. Additionally, decreased fuelwood consumption contributed to **environmental sustainability** by lowering deforestation and carbon emissions while enhancing overall cooking efficiency and air quality.
- **Indirect Beneficiaries:** The project also generated **employment opportunities for 30-50 local youth**, who were engaged as **Digital Runners**. These individuals assisted in **cookstove distribution, beneficiary registration, and project monitoring**, gaining hands-on experience in **sustainability and climate change awareness**.

SARDA's efforts in this initiative have not only fostered **health and environmental benefits** but also **empowered local communities** through livelihood opportunities and skill development.

3. Consultancy Services for Third-Party Evaluation of Government Schemes (FOREST SECTION)

SARDA provides specialized consultancy services to various district and state governments, particularly for third-party evaluations of government-sponsored schemes and programs. These evaluations are critical for assessing the effectiveness, efficiency, and impact of public sector initiatives, ensuring transparency, and facilitating data-driven improvements in implementation.

At present, SARDA is engaged in major evaluation projects with the Forest Departments of Jharkhand and Madhya Pradesh, bringing its expertise in research, field surveys, and data analysis to support evidence-based decision-making.



Current Engagements:

- **Jharkhand:** SARDA has been entrusted with the evaluation of Plan Schemes across all 50 Forest Divisions of the state.
- **Madhya Pradesh:** SARDA is conducting third-party evaluations of CAMPA (Compensatory Afforestation Fund Management and Planning Authority) activities. The work is organized into:
 - 3 groups covering 43 Forest Divisions (previous phase)
 - 5 new groups scheduled for the Financial Year 2023-24

These evaluations involve extensive field verification, stakeholder consultations, geospatial analysis, and impact assessments, helping forest departments strengthen governance, accountability, and the effectiveness of conservation and afforestation efforts.





➤ CORPORATE SOCIAL RESPONSIBILITY (CSR)

1. Bharat India Jodo- BIJ 0.3, “Resilient Communities, Mandla- A Reliance Foundation Project

Reliance Foundation BIJ 3.0 – SARDA Implementation

SARDA is implementing *Reliance Foundation's Bharat India Jodo 3.0* program in Mandla, targeting small and marginal farmers with limited livelihood options and rain-fed land. The project focuses on reducing migration, improving farming practices, and enabling sustainable, diversified incomes through low-cost, high-output agriculture.

Key Highlights:

- Empowered farmers with climate-resilient, adaptive farming across **772.53 ha**, and improved agricultural practices over **785 ha**.
- Created **5.33 lakh cum** of water harvesting capacity; improved water access in **15 villages**.
- Promoted **grey water management** in **396 households** and brought **256.48 ha** under efficient water use.
- Supported **1201 persons** in new/existing livelihoods and engaged **1262 women** in digital and financial literacy-linked livelihood activities.
- Facilitated **125 SHGs/producer groups**, with **655 producers** benefiting from collective marketing/ services worth **₹1.528 Cr**.
- Strengthened **6 farmer collectives** with technical and managerial support.
- Enhanced food/nutritional security in **872 households**, covering **24.8 ha** with bio-fortified crops.

The project fosters community-driven development, promotes local ownership, and builds climate-resilient, economically stable rural communities.

➤ Consultancy Services for Research Survey, Planning, Development & DPR Preparation (Resource Support Unit)

Since its establishment in 2001, Social Action for Rural Development (SARDA) has been dedicated to addressing developmental challenges, drawing on expertise in various domains. The organization specializes in Social and Environmental Impact Assessments, Social Impact Studies, Asset Valuation, resettlement and rehabilitation (R&R) studies, and technical support for land acquisition. SARDA also excels in evaluating Forest Development Agencies (FDA), preparing Detailed Project Reports (DPR), formulating Micro Plans for Joint Forest Management Areas, conducting PRA exercises, and carrying out Baseline Surveys and Research & Planning Services.

With its technical proficiency, SARDA has been instrumental in assisting Central and State Governments as well as independent agencies across nine states in India—Jharkhand, Bihar, Madhya Pradesh, Odisha, Chhattisgarh, Uttar Pradesh, Maharashtra, West Bengal, and Jammu & Kashmir—by providing research-driven solutions and strategic planning support.

Major assignments undertaken during the FY 2024-25 are:

2. **BLSES/ R&R planning & Implementation of Western Coalfield Limited (WCL) sites:**

Baseline Socio-Economic Surveys (BLSES), Social Impact Assessment Studies (SIAS), and Rehabilitation & Resettlement (R&R) planning for various mining projects in India. The organization facilitates the preparation, approval, and implementation of **Social Impact Management Plans and R&R Action Plans** for communities affected by opencast mining activities.

Some of its key projects of 2024-25 are as follows,

- Conducting **BLSES and SIAS** for **Urdhan Village** (Pench Area, WCL) and **Ukani Village** (Neeljai Expansion Deep Opencast Mine).



- Preparing and obtaining approvals for **R&R Action Plans** in **Ukni Deep OCM (Wani North Area, Maharashtra)** and **Adasa U/G to OC Mine (Nagpur Area)**.
 - Appointing NGOs to conduct **BLSES and Rehabilitation Action Plans (RAPs)** for **Piraya Village Gokul OC Mine (Umrer Area, Nagpur), Shirpur Village- MKD OC Mine (Umrer Area, Nagpur), and Kolgaon villages Ballarpur North West Open Cast Mine, WCL Ballarpur Area**, covering hundreds of affected families.
3. **Consultancy services to Central Mine Planning and Design Institute Limited (CMPDI) & Mahanadi Coalfields Limited (MCL)** for Environmental Baseline Data collection / generation and analysis of various samples of Group-II (Flora and Fauna Survey) & Group III (Socio-Economic Study).
- Conducting **Baseline Surveys on Socio-Economic Studies (SES) and Flora & Fauna** at various sites of **Mahanadi Coal Limited in Jharsuguda, Odisha**.
 - Generating **Baseline Data for Group-III (SES) & Group-II (Flora & Fauna Studies)** for **Cluster VIII of BCCL, Dhanbad, Jharkhand**.
 - Collecting **Baseline Data for Group-III (SES) & Group-II (Flora & Fauna Studies)** for **Hingul OCP of MCL, Angul, Odisha**.
4. **Consultancy services for conducting Social Impact Assessment (SIA) Studies and Resettlement & Rehabilitation (R&R) assessments** across multiple states in India. The organization has successfully undertaken the following assignments for the year 2024-25.

- **11 SIA & R&R studies in Jharkhand**
- **4 SIA studies in Odisha**
- **1 SIA study in Uttar Pradesh**
- **2 SIA studies in West Bengal**

SARDA's expertise in **social impact evaluations and rehabilitation planning** ensures effective strategies for addressing displacement and community development in these regions.

5. **Consultancy services for asset surveys and valuation** in key coal mining regions. This includes:

- **Assessment and valuation of 500 Project Affected Families (PAFs)** in **Pachwara South Coal Block**, under **M/s Neyvelli Uttar Pradesh Power Ltd. (NUUPL) Lignite C, Limited, Dumka, Jharkhand**.
- **Evaluation of 250 PAFs in Patrapali Village, located on the northwest side of the Talabira II & III Opencast Project (OCP) site, for ADANI Pvt. Ltd.**

SARDA's expertise in **asset valuation and compensation planning** plays a vital role in ensuring fair rehabilitation and settlement processes for affected communities in these coal block regions.

6. SARDA has been empanelled with the SBI Foundation to conduct a **Baseline and Impact Assessment Study**. SARDA has been entrusted with the research titled "**Baseline cum Biodiversity Assessment for Mangrove Restoration in the Sundarbans, South 24 Parganas, West Bengal & Palghar Maharashtra.**" This study focuses on evaluating **proposed plantation areas** and examining **community perceptions and dependencies on mangrove ecosystems**.





7. Prepared the detailed Project Report of PMKSY 2.0 works in Nawadih Block of Bokaro District. DPR was prepared for the Watershed Management Program for holistic development of the Area to increase Ground table, Crop Intensity, etc.
8. Prepared the Detailed Project Report (DPR) for SLWM, Zila Parishad, Nagpur, and Gondia District of Maharashtra.
9. **PMU under DMFT**

SARDA, in agreement with the Deputy Commissioners of Dumka and Chatra, is managing the Project Monitoring Unit (PMU) under the District Mineral Foundation Trust (DMFT). The PMU acts as the nodal agency to support the planning, implementation, and monitoring of DMFT projects under the guidance of district authorities.



10. **Village Development Plan**

Pradhan Mantri Adi Adarsh Gram Yojana (PMAAGY) aims to transform villages with significant tribal populations into model villages. Under PMAAGY, SARDA provided consultancy services to ITDA, Ranchi, GovtS of Jharkhand for the preparation of Village Development Plan for the selected 37 villages from 3 blocks of Ranchi District, Jharkhand.



SPECIAL PROJECTS:

A. IMPLEMENTATION & MANAGEMENT OF KRISHAK PATHSALA AND BIRSA GRAM UNDER SAMEKIT BIRSA GRAM VIKAS YOJANA (FY 2024-25)

SARDA is implementing this integrated initiative in Ramgarh, Jharkhand, to enhance farmer skills in agriculture, animal husbandry, fisheries, and allied sectors. The program promotes departmental convergence, infrastructure development, input distribution, market access, and awareness of government schemes.

Key Highlights:

- Construction of cow shed, piggery shed, and training hall
- Deep boring (3 units) and installation of 2 solar pumps
- 1-acre pond developed; 60 lakh Jeera fish fingerlings introduced
- Mushroom production unit established

Agriculture Initiatives:

- Horticulture on 2 acres; paddy on 3 acres
- Cultivation of radish, groundnut, sweet potato, green pea, brinjal, tomato, beetroot (on 3.5+ acres)
- Floriculture (marigold, gladiolus) on 1 acre

Showcased Achievements:

SARDA, with support from the Agriculture Department, showcased the Krishak Pathsala program during the Republic Day Parade in Ramgarh, highlighting its efforts in sustainable farming and rural development initiatives.



B. SCHEME OF FUND FOR REGENERATION OF TRADITIONAL INDUSTRIES (SFURTI)

SARDA is implementing the SFURTI program, an initiative of the Ministry of MSME, to promote cluster development. The Balaghat Agro Cluster in Baihar Block, Madhya Pradesh, is being developed under this scheme.

Objectives:

- Establish value-addition, processing, and warehousing facilities
- Prevent distress sales by small producers
- Enhance entrepreneurial skills of agro-producers

Outcomes:

- Common Facility Centre constructed and machinery installed
- Combined hard and soft interventions to boost production
- Promotion of organic farming and efforts for PGS certification
- Ongoing awareness and skill training programs in collaboration with local FPOs

SARDA'S INITIATIVES

SARDA is committed to socio-economic upliftment for marginalized people through the promotion of NRM-based livelihood activities. SARDA strongly believes that sustainable growth in agriculture is possible with the introduction of a scientific approach and technology mixed with the recognition of indigenous knowledge. Also, it aims to improve the quality of life in rural areas by working with rural community groups to unveil and support the potential and opportunities within them.

SARDA MUSHROOM SPAWN CENTRE (SMSC)

Mushroom Production is a viable alternative option for marginalized and vulnerable sections with minimum input and less labor. SARDA is facilitating the Institutionalized livelihood promotion among SHG women through Mushroom Production for their Socio-Economic upliftment. Mushroom Cultivation requires adaptation of technology application and a scientific approach, which requires

training and supply of inputs. For this, SARDA has established a **SARDA Mushroom Spawn Centre (SMSC)** at Ramgarh to ensure a regular supply of Spawn to the womenfolk and make the maximum profitability out of the Mushroom Production business.

SARDA Agro Tourism Centre (SATC)

Intending to promote the adaptation of technology applications in livelihood promotion, SARDA has set up SARDA Agro Tourism Centre (SATC) as a training cum demonstration site or Tourist Visiting Centre in the HARRNALA village of Balaghat district in Madhya Pradesh. The center is adjacent to Kanha National Park. The center provides theoretical and practical knowledge regarding different NRM-based activities. This center is being promoted with the exhibition of different practices of organic farming, vegetable cultivation (3-tier system), Hi-tech Nursery, Vermicompost production, Dairy, Goatry, Fishery, Duckery, Soil, and Water Conservation, Lac Promotion, Biogas Unit for cooking and lighting, Food Processing center, etc. The center has full residential facilities with refreshment facilities, training halls, cottages, mud houses, etc.

SARDA INSTITUTE OF VILLAGE MANAGEMENT (SIVM)

The social development sector is facing a huge crisis of committed, dedicated, and enthusiastic professionals who can contribute effectively to the upliftment and betterment of society, right from the grassroots level. Considering the urgent need Social Action for Rural Development (SARDA) has set up a rural management institute i.e. SARDA Institute of Village Management (SIVM).

SARDA Institute of Rural Management offers the best facilities to its students, including the best Faculty for the course of Rural Management.

- Classrooms with all modern facilities.
- Conference hall
- Well-equipped Library with a Computer lab.
- Indoor refreshment/ recreation room
- Hostel facility for both boys and girls.





SARDA GIS CELL

For extension of outreach and enhancement of performance, adaptation of new technologies in the development sector is mandatory. SARDA is always ahead in its thoughts and has always been at the frontline for utilizing the use of new technology in the field of Rural Development. With this vision, SARDA has established a GIS cell that comprises technical and management personnel with extensive expertise in IT, GIS, and CAD technologies, capable of delivering quality services in the areas of Image processing and Analysis, Data Conversion, Document Archival and Management, and other IT related Application.

Tasks accomplished by SARDA GIS Cell:

1. Cadastral Sheet Georeferencing, Digitization and Attribution of 2 Villages under Hemara WDF of Gaya, Bihar.
2. Cadastral Sheet Georeferencing, Digitization and Attribution of 4 Villages under Jogernala WDF of Mirzapur, Uttar Pradesh.
3. Location and Toposheet Map Composition of 2 Villages under Sukhalkhad WDF of Kathua, Jammu & Kashmir.

4. Land Use and Land Cover Map Composition of the entire block of Kirnapur and Lanji, Madhya Pradesh.
5. 20 No.'s of LU/LC, Slope, Soil, W/S, and Drainage Map Composition for Nawada Evaluation Work.
6. Block-wise Panchayat Map of entire blocks of Balaghat, Madhya Pradesh under JJM Program.
7. 30 No.'s of Location Map Composition of several areas of Jharkhand, Bihar, Maharashtra, Madhya Pradesh and Chhattisgarh.
8. Location Map, Toposheet Map, Drainage Map and MWS Map Composition of selected AOI Villages of Dari block, Hazaribagh, Jharkhand.
9. Location Map, Toposheet Map, Drainage Map and MWS Map Composition of selected AOI Villages of Pathalgora block, Chatra, Jharkhand
10. Timeline Map Composition of Jharsuguda AOI Area.
11. Data Extraction from Bhuvan Portal for Micro Watershed Delineation of Hazaribagh and Chatra Area of Jharkhand

SARDA Multi Training CENTRE

SARDA has its own well-equipped Training Centre at **Ramgarh (Jharkhand) and Nagpur (Maharashtra)** to carry out training on different skills. The training center has the entire basic infrastructure along with the residential facilities. During the year, the centre supports in execution of different training and exposure activities for different projects of our organization and other organizations too. The Training Infrastructure includes Lac research center demonstration sites, on-field Training, Training research materials, etc. Different training subjects Covered here include:

- Lac Cultivation and Processing
- SHG Modules
- Soil Conservation Activities
- Water Conservation Activities
- Vermi Compost
- Agriculture
- SRI and SWI
- Handicraft
- Watershed Promotion
- Horticulture Promotion, etc.





Our Workplace Network

Head & Regional Office for Jharkhand, Chhattisgarh & Odisha

SARDA Bhawan, Chhotki Murram, Ward No-05, Ramgarh Cantt., Dist.-Ramgarh, Pin-829122 (JH)

☎ 9431146129, 9431146893, ✉ sardagroups@rediffmail.com, sardagroup01@yahoo.com 🌐 www.sardaindia.org,

📘 https://www.facebook.com/sardaindia2001, 📺 https://x.com/SARDA_ORG, 📷 https://instagram.com/sarda_india/

📺 https://www.youtube.com/channel/UCJUSpUoEtgR5vuEWyIP5qKA, 🌐 SARDA Agro Tourism Centre: https://www.sardaindiasatc.org

Regional Office for Bihar, Uttar Pradesh and Jammu & Kashmir

Near Supriya's Ram Raj Villa Apartment, National Seed Co-operation Road, Shashtri Nagar Market, Shekhpura, Patna -14, Bihar, Mobile No. : 9431146129, 9471565011,

Regional Office for Madhya Pradesh:

Sarda Agro Tourism Centre (SATC). Gram Harranala, Block – Baihar, District- Balaghat, Madhya Pradesh, Pin- 481105., Telephone No: 07182-251033, Mobile no: 9431146129, 9301484500

Regional Office for Maharashtra

C/O Rural Development Resource Centre (RDRC), Vill-Wajbori, Katol Road, Block-Katol, District-Nagpur, Landmark-Hirantal Farm, Pincode- 441302, Maharashtra Mobile no.: 9431146129, 8275401865

