



SOCIAL ACTION FOR RURAL DEVELOPMENT

... illuminating Rural India

SARDA, a multi-dimensional Non-Governmental Organization established in 2001, has been actively involved in various sectors such as Community Based Natural Resource Management, Women Empowerment through Livelihood promotion under Forest, Farm and Non-farm sectors, Tribal Development, Agriculture Development, Drinking Water and Sanitation, Environmental Conservation, Research Survey, Third Party Consultancy and Sustainable development programs.



ANNUAL REPORT

2023-24



OUR ORGANIZATION

Our Tag line	: ...illuminating Rural India
Legal Status	: Registered Under Societies Reg. Act XXI, 1860
Registration Number	: 135/2002-03 Dated: 28/02/2003 (Ranchi, Jharkhand)
Year of Establishment	: 2001
FCRA Registration No	: 337750085
EPF Number	: JHRAN0033419000
ISO 9001:2015 Cert. No.	: IAS/QMS/C18831
MCA Registration for undertaking CSR Activities	: CSR00002185
MSME Registration	: UDYAM-JH-19-0004056

Income Tax Related

PAN Number	: AADTS1984N
12AB Registration No	: AADTS1984N23PT01 - 12AB
Exemption U/S 80G Registration No	: AADTS1984N23PT02 - 80G
TAN Number	: RCHSO24006F
GST Number	: 20AADTS1984N1Z6

Registered Office:

SARDA Bhawan, Chhotki Murram, Ward No- 05, Ramgarh Cantt., Dist.-Ramgarh, Pin-829122, Jharkhand

Administrative Offices:

Head & Regional Office for Jharkhand, Chhattisgarh & Odisha

SARDA Bhawan, Chhotki Murram, Ward No-05, Ramgarh Cantt., Dist.-Ramgarh, Pin-829122 (JH), Mobile No. -9431146129, 9431146893
Email Id: sardagroups@rediffmail.com, sardagroup01@yahoo.com, Website: www.sardaindia.org, Facebook : <https://www.facebook.com/sardaindia2001>,
Twitter: https://twitter.com/SARDA_ORG
Instagram : https://instagram.com/sarda_india/
YouTube : <https://www.youtube.com/channel/UCJUspUoEgR5vuEWyIP5qKA>
Website - SARDA Agro Tourism Centre: <https://www.sardaindiasatc.org>

Regional Office for Bihar, Uttar Pradesh and Jammu & Kashmir

Near Supriya's Ram Raj Villa Apartment, National Seed Co-operation Road, Shashtri Nagar Market, Shekhpura, Patna -14, Bihar
Mobile No. : 9431146129, 9471565011

Regional Office for Madhya Pradesh

SARDA AGRO TOURISM CENTRE (SATC)
Gram Harranala, Block – Baihar, District- Balaghat, Madhya Pradesh,
Pin- 481105
Telephone No.: 07182-251033, Mobile no.: 9431146129, 9301484500

Regional Office for Maharashtra

C/O RURAL DEVELOPMENT RESOURCE CENTRE (RDRC),
Vill-Wajbori, Katol Road, Block-Katol, District-Nagpur,
Landmark-Hirantal Farm, Pincode- 441302, Maharashtra
Mobile No.: 9431146129, 8275401865

FROM THE DESK OF SECRETARY CUM MANAGING DIRECTOR

It has always been my pleasure to keep all our stakeholders informed about our collective progress to promote sustainable and equitable development through a collaborative participatory approach. Since our inception in 2003, we have continuously expanded our outreach and contributed to society, bringing impactful changes to the lives of communities.

Through our various interventions, including Integrated Watershed Management, Climate-Resilient Sustainable Agriculture, and FPO promotion and management, we contribute to **7 Sustainable Development Goals (SDGs)** laid down by the United Nations, aligning our actions with the National priorities. By engaging community institutions, we work towards achieving economic development, social inclusion, and environmental sustainability.

SARDA, being active in **8 states in INDIA**, covers **610 Blocks from 108 Districts**, impacting the lives of over **1.5 Lakh** rural Households through its knowledge transfer & development initiatives. Through **Integrated Water Resource Management** practices, we made a significant contribution to ensuring the availability of irrigation on an additional **4500** acres of land and the restoration of **7000** acres of wasteland. SARDA is actively involved in land treatment efforts across more than **1000 hectares** of challenging terrain in the Jammu region and aims to enhance and expand land and water conservation initiatives over the next five years. This vision is being pursued in collaboration with NABARD (National Bank for Agriculture and Rural Development) and the state government of Jammu. The focus on sustainable land management and water resources is crucial for the region's development and environmental well-being. Similarly, in more than 500 Gram Panchayats of Jharkhand, Chhattisgarh & MP, SARDA is working under the **Jal Jeevan Mission Program** of the Government of India (GoI) to ensure clean water management and water conservation. Furthermore, in parts of Maharashtra, SARDA has prepared and implemented over 50 Gram Panchayats **Water Security Plans**. These plans aim to revive groundwater through sustainable management under the ATAL Bhujal Yojna Program by the Government of India (GoI).

Agriculture is the mainstay of the rural economy in India; however, the farming community is suffering from decade-long agrarian distress. Hence, we are promoting climate-resilient agriculture & supporting need-specific strategies to help farmers become self-reliant in both reviving their agricultural produce and income and reducing the cost of crop cultivation, through the promotion of FPOs. SARDA, as CBBO under the Central Sector Scheme of GoI, has been working for the formation and promotion of the **53 Farmer Producer Organizations (FPOs)** in 5 states of INDIA i.e. Jharkhand, Bihar, MP, UP, Maharashtra to establish collectivization of production, procurement, and business activities that could add to farmer's income in the region through different interventions related to agriculture and allied sectors.

SARDA, in collaboration with the **Reliance Foundation**, is implementing its Corporate Social Responsibility (CSR) project called "**Bharat India Jodo - BIJ 3.0 Resilient Communities**" in Mandla, Madhya Pradesh. The project aims to enhance climate resilience in 150 villages by building adaptation and mitigation capabilities within the communities. Specifically, it focuses on addressing climate change impacts related to food security, nutrition, and livelihoods. By diversifying into Agri-allied and non-farm sources, the project aims to de-risk household incomes. Additionally, SARDA is involved in promoting clean cooking practices through the distribution of **Improved Cookstoves (ICS)** to **8300 beneficiaries** in parts of Madhya Pradesh, with support from **Schaeffler India Limited**. The adoption of improved cookstoves is essential for improving environmental quality and public health in rural India. Furthermore, SARDA is actively engaged in promoting **bamboo plantation-based agroforestry cum horticulture** in Madhya Pradesh, Chhattisgarh, Jharkhand, and Maharashtra. This initiative, carried out in collaboration with **Kosher Climate India Pvt. Limited**, contributes to sustainable land use practices and aligns with the United Nations' Sustainable Development Goals (SDGs). Overall, SARDA's efforts reflect small but meaningful steps toward achieving a positive impact on the environment, livelihoods, and community well-being.

SARDA is also growing as a competent resource support organization in providing consultancy services to corporates, State departments, and Mining Agencies in its areas of intervention across 8 states in INDIA. In FY 2023-24, SARDA facilitated providing third-party evaluation services to evaluate the works done under various schemes by the forest department for the **Government of Jharkhand and MP**. Currently, we are also providing consultancy services for Social Impact Studies, Asset valuation, R&R studies, technical assistance in the land acquisition process, etc to agencies like **WCL, CCL, WBPDC, NLC, DBCL, ADANI, AM/NS India, etc** in states like Jharkhand, Maharashtra & Odisha. SARDA is also providing its consultancy services in establishing and running the Project Monitoring Unit (PMU) under the District Mineral Fund Trust (DMFT) at Dumka & Chatra District Jharkhand. Our goal is to extend and enhance our consultancy services across all of India, catering to the needs of various agencies.

Over the years, SARDA as an organization has evolved as a leading organization in undertaking outcome-driven, evidence-based developmental activities aligned with sustainable development goals. Forging long-term partnerships with various government departments, corporations, and international organizations has helped in bringing about measurable changes in the lives of the poorest & Vulnerable communities through our need-based specific development interventions creating livelihood opportunities through community engagement & participation. Our initiatives have evolved as we remain responsive to the ever-changing needs of society and critically investigate the true impact of our work.

We are extremely pleased and proud to present the **2023-24** annual report, which reflects our focus, planning, and execution in pursuit of our purpose. I would like to express gratitude to all our dedicated team members, community, partner funding agencies, CSR Corporates, and stakeholders for Joining Hands in our hard work and dedication to work tirelessly to achieve our goals. All these have been made possible by the community participation and dedicated work of our organization. It is my special pleasure to thank every member of this group and congratulate them for rising to new challenges.



Dr. N. P. Singh
(Managing Director)



Journey so far

For over twenty years, SARDA has played a pivotal role in addressing development goals related to poverty and hunger by focusing on community development, sustainable agriculture, integrated development, alternative income-generating activities, and village management. Through its efforts, SARDA has made significant contributions towards creating a more sustainable and prosperous future for communities in need.

The issues of climate change, water scarcity, and unsustainable use of natural resources are threatening the livelihoods of rural communities, particularly farmers facing poverty. These challenges highlight the need for concerted efforts to address food and financial security concerns. As we strive to empower and mobilize communities to access their rights and resources, it is crucial to recognize the unequal distribution of opportunities and resources. By working together with stakeholders, we can create a more equitable and sustainable future for all.

SARDA is successful in expanding of additional 3000 hectares of the area under its Direct Implementation Project for Watershed Promotion and reaching up to a total of 19000 hectares of land. This achievement made a significant contribution to ensuring the availability of irrigation on 4500 acres of land and the restoration of 7000 acres of wasteland.

SARDA has supported more than 1.5 lakh rural families by enhancing their traditional skills and engaging with new alternative livelihood activities. SARDA has successfully promoted 18000 of women SHGs capable of pulling themselves out of poverty and living with dignity. SARDA's promoted 53 FPOs are providing platforms for 30000 farmers to have ownership of their production, supply chain, and sharing of profits. SARDA is also a significant contributor to fulfilling the government's agenda of community welfare by implementing various anti-poverty programs.

We have continued our work in the conservation and utilization of local resources to achieve ecological balance and build sustainable livelihoods.

Areas of Intervention

- Jharkhand** : All 24 Districts
- Bihar** : Nalanda, Jamui, Gaya, Aurangabad
- Maharashtra** : Gondia, Bhandara, Gadchiroli, Chandrapur, Nagpur, Jalgaon, Amravati, Parbhani, Yavatmal
- Madhya Pradesh** : All 55 Districts
- Chhattisgarh** : All 27 Districts, Odisha Jharsuguda, Angul, Sundargarh, Bhubaneswar, Bhadrak, Kendrapada & Nabarangpur
- Uttar Pradesh** : Ghazipur, Mirzapur, Chandauli, Sant Kabir Nagar, Gorakhpur, Gonda, Firozabad and Pratapgarh
- Jammu & Kashmir** : Kathua and Reasi

Territorial Outreach





VISION

To contribute in achieving Sustainable Development Goals in areas of our operation

MISSION:

Alleviating Rural Poverty by promoting the people of rural India, sustainable integrated development through partnership and total village management that makes a real difference in their life, creating ownership and igniting initiative and innovation.

Aims and Objectives:

SARDA aims for the all-round development of the villages by providing,

- Formation of self-help groups and self-employment opportunities for men & women.
- Technical & social support for utilizing natural resources like land, water, Forest, animal & agriculture management, horticulture, and cottage industries.
- Infrastructure development such as approachable roads, housing, hospitals, schools, community halls, and marketing.
- Providing training in microfinance and developing entrepreneurial skills in the rural sector.
- Developing human resources by establishing schools, and technical & vocational institutions.
- Giving all organizational support for the scientific development of rural villages & entering them into the enlightened world.
- To organize women & downtrodden tribal for constructive development.
- To prohibit alcoholism, drug –addicts, and superstition through social awareness.
- To develop a link between the government and the rural population by popularizing & action of the government among the rural population.
- To create a suitable environment based on equality and fraternity.

Strategies Adopted:

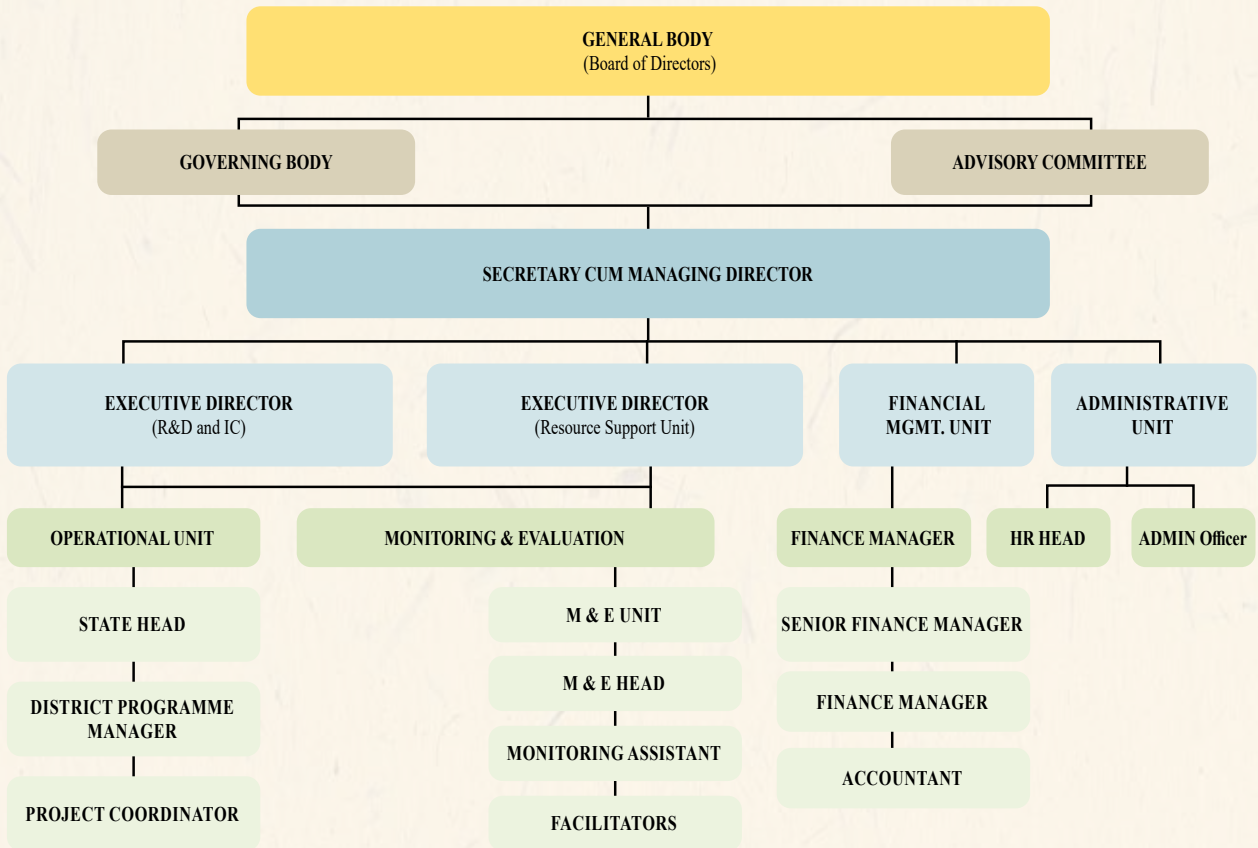
We aim to achieve our objectives through:

- Organizing rural communities into village-level organizations to identify, analyze, and plan development activities through their participation.
- Formulating and implementing natural resource management programs through people's participation.
- To develop a linkage between GO-NGO-Villagers.
- Formulating a system where village-level organizations conduct monthly meetings and convert problems into opportunities.





Organizational Structure-Organogram



Governing Body:

The governing board of SARDA comprises 7 members including two office bearers. The list of incumbents is below mentioned:

S. No	Name	Designation
1	Dr. Ravi Shankar	Chairperson
2	Mrs. Ragini Kumari	Vice- Chairperson
3	Smt. Mamta Singh	Secretary
4	Shri Binay Kumar	Treasurer
5	Mr. Gaurav Kumar Panda	Member
6	Mrs. Savitri Panchale	Member
7	Mrs. Priyamvada Singh	Member





Development Interventions

Developmental interventions are designed to target key developmental areas to bring out considerable change in the lives of deprived communities.

SARDA is currently witnessing its presence in 8 states including Jharkhand, Bihar, Madhya Pradesh, Chhattisgarh, Maharashtra, Odisha, Uttar Pradesh, and Jammu & Kashmir spreading across 108 districts, 610 blocks, and covering more than 13,000 villages. SARDA aspires to expand its outreach to all the states of India within this decade. SARDA aims to provide services in bringing out the deprived section of society from the vicious circle of poverty and hunger through its development model and approach.

Social Action for Rural Development (SARDA) has been relentlessly working on developmental issues since its inception in 2001. It provides its technical expertise to various clients including Central and State governments, different departments, Autonomous Agencies, corporations, and other Independent Agencies.

SARDA follows a Functional Organization Structure where each Functional Unit handles different aspects of projects and services. The Functional Units are:

1. **HR & Administration Unit-** The HR and Administration Unit manages all aspects of human resources, such as recruitment, training, performance evaluation, and employee relations. Additionally, the admin team is in charge of handling office operations, facilities management, and logistical support.
2. **Operational Unit-** The Unit is responsible for implementing the strategies and plans set forth by upper management, as well as monitoring performance and making adjustments as needed.
3. **Financial Management Unit-** Overall, the financial unit serves as the backbone of the organization, providing the necessary financial information and guidance for decision-making. Additionally, the financial unit is responsible for ensuring compliance with financial regulations and standards to protect the organization's financial health.
4. **Monitoring & Evaluation Unit (M&E)-** The M&E unit collects data, analyzes results, and provides valuable insights to help improve program/project effectiveness and efficiency. By monitoring progress and evaluating outcomes, the M&E unit helps SARDA to make informed decisions, allocate resources effectively, and demonstrate accountability to stakeholders.

Moreover, the operational unit is responsible for the execution of awarded assignments to SARDA, and accomplishes its task under three different functional Units:

1. **Direct Action Project Unit (DAP Unit)**

This unit is responsible for the on-field execution of different interventions SARDA with the support of its sagacious team comprising experts from various fields such as Agriculture, Watershed, Civil Engineering, Rural Development, Forestry, Animal Husbandry, Social Mobilization, Capacity Building, GIS, etc. This Unit is responsible for the execution and timely completion of the assigned project in tune with the desired goals and objectives.

2. **Resource Support Project Unit (RSP Unit)**

This unit holds expertise in conducting research-based studies and providing Research, Evaluation & Planning Services to its client on Social Impact Assessments, Asset valuation, R&R studies, Technical assistance in the land acquisition process, Environmental Impact Assessments, Forest Development Agencies (FDA) Evaluation, Preparation of DPR, Micro Plan for Joint Forest Management Areas, Conducting PRA exercises, Cadastral Mapping & Digitization, GPS based forest Survey, Various Map Composition, LULC Mapping, Baseline Studies/Survey, etc.

3. **CSR Unit**

The CSR Unit aims to articulate a positive impact on the local community account of their social, economic, and environmental Scenario. This unit provides technical expertise to our CSR partners in the Planning, Monitoring, and Implementation of CSR-aided projects as well as support in the assessment of CSR interventions through Evaluation & Impact Assessment. This annual report presents and discusses SARDA's projects being implemented in the FY 2023-24, led by different functional units:





Categorization of Assignments

Direct Action Project Unit	Resource Support Unit	CSR Unit
<p>1. Watershed Development Program, WDF NABARD/ JOGARNALA / Watershed/ Sukhal Khaad/ Hatli Sawla Springshed, Programme</p> <p>2. Scheme of Fund for Regeneration of Traditional Industries (SFURTI), Ministry of MSME, GoI</p> <p>3. Livelihood and Enterprise Development Program, NABARD- Gazipur & Mandla</p> <p>4. Micro Enterprise Development Programme- Jammu</p> <p>Skill Development Program - Jammu</p> <p>Promotion of Farmer Producer Organization,</p> <ul style="list-style-type: none"> • NABARD-MP & MH • SFAC- JH, BR, UP • FPO Formation & Promotion through the National Dairy Development Board, • FPO Formation & Promotion, NCDC, Panna • FPO Formation & Promotion, UP -PCF <p>MNREGS-NRLM-CFP, Govt of Jharkhand.</p> <p>Jal Jeevan Mission, Dept. of Drinking Water & Sanitation, Ministry of Jalshakti in Madhya Pradesh, Chhattisgarh & Jharkhand.</p> <p>Bihar Skill Development Centre, Giddhaur, GoB</p> <p>Joint Liability Group Project NABARD, Hazaribag, Jharkhand.</p> <p>Capacity Building for Adaptation Technology (CAT), Mahanpur Kathua, Jammu, NABARD RO- Jammu</p> <p>FSPF Project, NABARD – Madhya Pradesh & Uttar Pradesh</p> <p>Atal Bhujal Yojna, GSDA Amravati, Maharashtra</p> <p>Implementation & Management of Krishak Pathsala and Birsa Gram under Samekit Birsa Gram Vikash Yojana sah Krishak Pathsala Yojana</p>	<p>1. Project Monitoring Unit (PMU) under DMFT, Dumka, Jharkhand</p> <p>2. Project Monitoring Unit (PMU) under DMFT, Chatra, Jharkhand</p> <p>3. BLSES/R&R/Planning and Implementation of WCL Sites:</p> <ul style="list-style-type: none"> ✓ YEOTMAL – Neeljay Exp. Deep OC Mine ✓ PENCH- Urdhan OC Mines ✓ YOETMAL- Wani North Area- Ukni Deep OC Mine ✓ NAGPUR – Gokul OC Mine ✓ NAGPUR – Adasa U/G to OC Mine ✓ NAGPUR- MKD-I OC Mine <p>4. Baseline Survey of SES and Flora & Fauna Survey at various sites of Mahanadi Coal Limited in Jharsuguda, Odisha.</p> <p>5. Base Line Data Generation for Group –III (SES) & Group II (FF Study) Of Cluster VIII of BCCL, Dhanbad, Jharkhand</p> <p>6. Social Impact Assessment Study in the State of Odisha</p> <p>Social Impact Assessment Study in the State of Jharkhand</p> <p>Social Impact Assessment Study in the State of Uttar Pradesh</p> <p>Asset Survey & Valuation of PAFs of Pachwara South Coal Block, Dumka, Jharkhand</p> <p>Preparation of BLSES / Asset valuation. R&R of PAFs of Brinda Sisai Coal Block in Chatra District</p> <p>Detailed Project Report (DPR) Preparation for SLWM, Zila Parishad, Nagpur and Gondia District of Maharashtra</p> <p>Detail Project Report Preparation of PMKSY 2.0 – Nawadih – Bokaro</p> <p>Consultancy services for Third Party evaluation.</p> <ul style="list-style-type: none"> • Third Party Consultancy Services to Forest Department of Jharkhand, MP & Chhattisgarh State. • Third Party Evaluation of works undertaken under the Plan Scheme in Jharkhand. <p>Training on Honey Beekeeping to FPO Farmers promoted by NDDB, JH.</p> <p>PRI Training, Panchayati Raj Department, Govt. of Jharkhand.</p> <p>Preparation of Village Development Plan, Ranchi</p>	<p>1. Bharat India Jodo -BIJ 0.3 “Resilient Communities”, Mandla (MP) – A Reliance Foundation Project</p> <p>2. Promoting Clean Cooking through the Distribution of ICS to 8300 Beneficiaries, supported by Schaeffler India Limited.</p> <p>3. Promotion of Bamboo Plantation based Agroforestry cum Horticulture in MP, CG, JH, and Maharashtra in collaboration with Kosher Climate India Pvt. Limited.</p>



Direct Action Unit Lead Projects

Watershed Development Program

To restore the ecological balance by harnessing, conserving, and developing degraded natural resources such as soil, vegetative cover, and water through prevention of soil run-off, regeneration of natural vegetation, rainwater harvesting, and recharge of the groundwater table, SARDA, with support of NABARD and State Government has been implementing three area-based watershed program for the development of wastelands/degraded lands WDF program is being executed in States of Jharkhand, Bihar, Jammu & Kashmir and Uttar Pradesh.

Jogernala Water Shed Development Programme is an integrated program for the rehabilitation of watersheds for the regeneration of natural resources, initiated with the financial support of NABARD. SARDA- Mirzapur as a Project Implementing Agency (PIA), implementing capacity building phase of watershed development project in Kubakhurd and Goverdaha villages in Rajgarh block of Mirzapur district in UP. Jogernala watershed has a gross area of 1287.22 ha, of which 94.22 ha area is taken under the CBP phase for treatment.



Talain Watershed Development Programme is an integrated Programme for the rehabilitation of watersheds for the regeneration of natural resources, initiated with the financial support of NABARD. Social Action for Rural Development (SARDA) Reasi, as a Project Implementing Agency (PIA), implementing the Capacity Building Phase of a watershed development project in Lakhri, Nandh, Dhan Jasdhar, Kandharnu, Salore & Suiyan villages in Nagrota Gujroo block of Kathua district in Jammu and Kashmir. Talain watershed has a gross area of 1700.50ha, in which 1144.05 ha area is taken under the CBP phase for treatment.

Khothian and Khera Lehar Watershed Project is an integrated Programme for the rehabilitation of watersheds for the regeneration of natural resources, initiated with the financial support of NABARD. Social Action for Rural Development (SARDA) Reasi, as a Project Implementing

Agency (PIA), implementing the Capacity Building Phase of a watershed development project in the Pouni block of Reasi district in Jammu.

Sukhal-Khad Watershed Project, with the main objective of providing a permanent solution to the water problem, improving agricultural productivity, increasing groundwater level, and bringing barren land into cultivable land in a remote village of Athyalta, Mahanpur block of Kathua district.

As per the field conditions, the Sukhal-Khad area is highly suitable for watershed plan implementation and the area has deep ravines and high hills. Social Action for Rural Development (SARDA) is providing necessary technical and material support to this WDF scheme funded by NABARD. This project is beneficial in soil conservation, water harvesting, and greenery development in villages. Four types of activities have been undertaken by Sukhal-Khad VWC for agriculture productivity enhancement and groundwater level enhancement – 1. Area Treatment 2. Drainage Line Treatment, 3. Agriculture Promotion Measures and 4. Livelihood Activities.



GPS Map Camera
Kuwa Khurd, Uttar Pradesh, India
2RCP+WVR, Kuwa Khurd, Uttar Pradesh 231304, India
Lat 25.022637°
Long 82.836238°



NABARD-supported **Hatli Sawla Springshed Programme** is being implemented by Social Action for Rural Development (SARDA) in the Hatli and Sawla villages of Keerian Gandyal Block of Kathua District. The project is expected to result in better-informed farmers about Springshed components, modern farming systems, treatment of non-arable land, and crop improvement programs in arable land. This will boost food security and climate change mitigation measures in the Project area and provide a sustainable environment and living conditions in the long run.



Impact/ Outcome:

The total direct land treatment area in 2023-24 covered 25 villages from 15 Panchayats in 7 blocks, benefitting more than 3000 families. The total area covered for treatment is 1136.50 Ha. WDF has enabled soil & water conservation and management, enhancing agricultural activities & production. Most importantly, villagers are institutionalized and are proactive in the internal monitoring, conservation, and judicious use of water at the village level. Farmers have been equipped with more knowledge and skills in water management, soil and moisture conservation measures, and modern agricultural practices to cultivate in drought-affected areas. Ponds and farm bunds have been created and developed to bring rainwater to the fields, harvest water effectively, and store it in sub-surface and groundwater. Goatry, Dairy, and Stitching machines provided additional sources of income for landless and asset-less families



Scheme of Fund for Regeneration of Traditional Industries (SFURTI)

SARDA is implementing the “Scheme of Fund for Regeneration of Traditional Industries (SFURTI)” a fund regeneration program of the Ministry of MSME to promote Cluster Development. SARDA is promoting the Balaghat Agro Cluster in the Baihar Block of the Balaghat District of Madhya Pradesh.

The Cluster Development Program under SFURTI is considered with the following Objectives

1. Establish requisite common value addition cum processing center, and ware-housing depot to improve the production, value-addition, and expand the existing market base.





2. Ability to withstand the pressure of distress sales by the marginal producers.
3. Improve entrepreneurial skills of agro-producers, to make them potential and vibrant producers.

Impact/ Outcome

- Construction of Agro Cluster Common facility Centre & Installation of Machinery completed, which will enhance the efficiency and productivity of the cluster units.
- The Hard Intervention along with the soft intervention will provide inputs to the production capacity of the cluster.
- The project will promote organic farming through the introduction of Vermicompost facilities in all the villages and make an effort to obtain Organic PGS certification, which will help the cluster get recognition for organic farming.
- Awareness Program and Skill training is going on with connecting with an FPO in the concerned area by the implementing Agency, SARDA



Livelihood Assistance Program for SHG under Livelihood Enterprise Development Program (LEDP)

To have a sustainable livelihood option SARDA envisages carrying out livelihood promotion programs in clusters through skill up-gradation programs, the establishment of demonstration units, and need-based support of critical infrastructure. Under LEDP there is provision for intensive training for skill-building, refresher training, backward-forward linkages, and handholding & escort supports. It also encompasses the complete value chain and offers an end-to-end solution to the SHG members. It aims to provide skill up-gradation training in batches covering Agri & allied activities as well as rural off-farm sector activities, the establishment of a demonstration unit, providing mentoring, hand holding, credit linkage, and linkage with resource organizations.



SARDA under the financial support of NABARD is undertaking the project on the Livelihood Enterprise Development Program (LEDP) in Madhya Pradesh to develop entrepreneurship among women in a cluster of 45 SHG contiguous villages.

Project Details:

S. No	State	Project Area	Activity	No. of SHGs	Beneficiary
1	Madhya Pradesh	Block-Mawai District – Mandla	Productivity enhancement and Processing and Value Addition of Kodo and Kutki (Minor Millets)	20	150
2	Madhya Pradesh	Block-Bijadandi District – Mandla	Productivity enhancement and Processing and Value Addition of Kodo-Kutki (Minor Millets)	25	150

Impact/ Outcome:

1. 45 SHG has been trained and linked with Livelihood activity.
2. 300 beneficiaries are trained on **Productivity enhancement, Processing, and Value Addition of Kodo-Kutki** (Minor Millets) through theory and practical exposure.
3. Each SHG has been provided hand-holding support, supply of seeds, and technical support.
4. Provided Millet Processing Unit Mawai LEDP beneficiaries



Micro Enterprise Development Programme

The Micro Enterprise Development Programme in Basholi (Kathua District, Jammu) is a commendable initiative that has the potential to transform the economic landscape of the region. By supporting and nurturing small businesses and entrepreneurs, the Programme paves the way for sustainable development and prosperity in Basholi and beyond.

SARDA implements the Programme, with the Support of NABARD, the women entrepreneurs who underwent MEDP training demonstrated great motivation and technical skills during their field exposure in Nagri Kathua, which enabled them to launch their businesses successfully. As a result, they have garnered interest from various entities, including NABARD and local administrations like RSETI Kathua and Block Administration Basohli. Their products have been well-received in the local market, reaching consumers from Nagrota (Basohli) to Pinther (Billawar). Through the marketing of jute bags, active members of the group have already earned between Rs 3000-5000 each in the past month.



Skill Development Programme

Under the SDP program of NABARD, SARDA generated self-employment through Rural Tourism in Basholi and Bani Tehsil of District Kathua under Jammu and Kashmir by upgrading the Managerial Skills of folk women and rural youth, Skill Development in rural unemployed youth about Horse Riding, Tracking and Tourist Guide and Marketing skills development for local Basohli painting and Crafts. In FY 2023-24, SARDA is working with 50 Candidates.

Promotion Of FPO

SARDA is committed to providing its facilitation to the Central Sector Scheme (CSS) for the formation and promotion of 10,000 Farmer's Producer Organizations (FPO) the Flagship program of the Government of India. SARDA is empaneled with NABARD, SFAC, NCDC, UP – PCF & NDDB.

As Cluster-Based Business Organizations (CBBOs) SARDA has taken up the responsibility to provide a bigger platform to the farmer members of 42 FPOs, to have ownership of their production, supply chain, and share of profits with the support of the funding agencies like NABARD and SFAC.

Details of Promoted FPOs:

1. In support of SFAC, SARDA as CBBO is promoting 29 FPOs spread across Jharkhand (9 FPOs), Bihar (10 FPOs) & UP (10 FPOs).
2. In support of NABARD, SARDA as CBBO is promoting 6 FPOs spread across Madhya Pradesh (3 FPOs) & Maharashtra (3 FPOs).
3. In support of NABARD, under the PODF scheme, SARDA is promoting 7 FPOs spread across Jharkhand (1 FPO), Madhya Pradesh (4 FPOs) & Maharashtra (2 FPOs)
4. In Support of NCDC, SARDA has assigned the "Implementation of Central Sector Scheme for formation and promotion of



FPOs as per the Operational Guidelines, 2020 issued by DAC&FW in Sadar block of Panna District in Madhya Pradesh.

- In Support of UP Cooperatives, SARDA has allotted the Implementation of a Central Sector Scheme for the formation and promotion of FPOs as per the Operational Guidelines, 2020 issued by DAC&FW in Baghauli, Haisar Bazar, Medhawal, Pauli & Semariawan blocks of Sant Kabir Nagar district of Uttar Pradesh.

SARDA has been working for the formation and promotion of the **53 FPOs** in 5 states of INDIA i.e. Jharkhand, Bihar, MP, UP, Maharashtra **Farmer Producer Organization** as CBBO under the Central Sector Scheme to establish collectivization of production, procurement, and business activities that could add to farmer's income in the region through different interventions related to agriculture and allied sectors.

SARDA as CBBOs facilitated the entire agricultural value chain from mobilizing over **1.5 lakh** farmers, aiding in registering about **20000** farmers as shareholders in **53 FPOs** promoted in 5 states of INDIA i.e. Jharkhand, Bihar, MP, UP, Maharashtra. The authorized total capital of all these 53 promoted FPOs is **Rs 180 lakhs** and mobilized share capital is **Rs 250 lakhs**, whereas the annual turnover of each FPOs is in the range of **Rs.10 - Rs.55 lakh**. All the FPOs are running in profits, and have mobilized a total of more than Rs 100 Lakhs as equity grants. We are also providing ongoing support to ensure sustainable market linkage through Enabling significant business transactions, with FPOs engaging in sales and marketing activities that bolster their financial profiles and market presence. As of now, SARDA has successfully promoted 25 various products under individual FPO Brand & Label, as well as also received GI tags on FPO Products (Chinnor Rice) in States like MP. Several of our chosen Farmer Producer Organizations (FPOs) and their products participated in various nationally renowned exhibitions across different regions of the country. These exhibitions included the Aadi Mahotsav in New Delhi, the Tarang Exhibition in Patna (BR) and Jamshedpur (JH), the Tarang Exhibition in Indore (MP), and Kisan Mela in Saraikeela and Simdega (JH).





Cluster Facilitation Project (CFP)- An Initiative For Aspirational Districts And Other Backward Areas In The Country Under Mahatma Gandhi Nregs- Jharkhand



SARDA in agreement with the Rural Development Department, Government of Jharkhand, is facilitating the MNREGS-DAY-NRLM-CFP Program. The CFP has a vision of addressing poverty in aspirational districts/backward areas with a -multi-pronged strategy of leveraging the synergies of different flagship programs of the Central Government/State Governments in convergence with Mahatma Gandhi NREGS through better coordination, planning, and implementation. The CFP shall strive to actively leverage the benefits of the Aspirational Districts Programme (ADP), CSR initiatives, philanthropic organizations, and think tanks under the leadership of the District Programme Coordinator (DPC).

In Jharkhand, SARDA leads the MNNREGA and DAY-NRLM-CFP Program in 359 villages from 48 Panchayats of Simariya, Fatehpur & Torpa blocks of Chatra, Jamtara & Khunti District of Jharkhand. 29303 numbers of beneficiaries are getting direct benefits from the program. It aims to strengthen the implementation of the MGNREGS program through critical facilitation and capacity-building roles at the grassroots, strategically mobilizing CBOs (SHG Collectives) and Gram Panchayats. SARDA is performing as a technical secretariat to the selected Gram Panchayats by employing a team of staff under the CFT Project.

Impact/ Outcome:

- 78 model DPR Prepared for Simariya, Torpa, and Fatehpur blocks of Chatra, Khunti, and Jamtara districts respectively.
- Birsa Harit Gram Yojna implemented for 30 Acres in Torpa, Khunti; 50 Acres in Simariya, Chatra and 45 Acres in Fatehpur, Jamtara.
- 120 Gram Sabha conducted for Awareness Programme under MGNREGA
- 180 SHG Meetings conducted for Awareness in Topra, Simariya, and Fatehpur blocks of Khunti, Chatra, and Jamtara Districts of Jharkhand State.
- Capacity Building & Training Programs for Bagwani Sakhi, Bagwani Mitra & Mate.
- 144 Rojgar Diwas has been organized in Khunti, Jamtara, and Chatra districts of Jharkhand
- Beneficiary selection completed under Abhua Awas Yojana in Khunti, Chatra, and Jamtara Districts.
- The SVEEP Programme has been conducted in the allotted blocks for the Voter Awareness Campaign.





Jal Jeevan Mission

Jal Jeevan Mission is envisioned to provide safe and adequate drinking water through individual household tap connections by 2024 to all households in rural India. The program aims to implement source sustainability measures as mandatory elements, such as recharge and reuse through greywater management, water conservation, and rainwater harvesting. The Jal Jeevan Mission is based on a community approach to water and includes extensive Information, Education, and communication as a key component of the mission. JJM looks to create a Jan Andolan for water, thereby making it everyone's priority.

In Madhya Pradesh, Chhattisgarh and Jharkhand, SARDA leads the Jal Jeevan Mission Program in 352 villages from 276 Panchayats of Lalbarra, Katangi, Kirnapur, Khairlanji, Paraswada, Balaghat, Birsa, Baihar, Lanji & Waraseoni Blocks of Balaghat District of Madhya Pradesh. And 120 Villages from 48 Panchayats of Simdega, Pakatand, Kurdeg, Bolba, Bansjor, Kolibira, Kersai, Thethaitangar, Bano & Jaldega Blocks of Simdega District. More than 22544 numbers of beneficiaries are getting direct benefits from the program. It aims to strengthen the implementation of the Jal Jeevan Mission program through critical facilitation and capacity-building roles at the grassroots, strategically mobilizing CBOs and Gram Panchayats. SARDA is performing as a technical secretariat to the selected Gram Panchayats by employing a team of staff under the Jal Jeevan Mission.

Project Profile

S. No	State	Project Area	Name of The Major Activities	No. of Activity
1	Jharkhand	Thethaitangar, Simdega Pakatand, Kurdeg, Bolba, Bansjor, Kolibira, Bano, Kaiser, Thethaitangar & Jaldega Blocks of Simdega District.	Baseline Survey of FHTC	26543
			Gram Sabhas, Village Action Plan Preparation, Jal Choupal, SHG Involvement, Water Resource Mapping Exercises, Water Budgeting Exercises, Water Safety Planning Exercises	Completed in 120 Villages
			Account Opening, Jal Jaanch (FTK)	68
			School Competition	212
			Rallies	107
			FHTC Celebration	33
			Field User App Upload	2145
			Model Village Preparation	6
2	Madhya Pradesh	Lalbarra, Katangi, Kirnapur, Khairlanji, Paraswada, Balaghat, Birsa, Baihar, Lanji & Waraseoni Blocks of Balaghat District	Capacity building, Gram Sabha, VWSC, Baseline HH Survey, School Rally/ Competitions, GP Stakeholders & VWSC Members Training, Behavior Change Communication - Prachar Rath, Village Action Plan, Training on Water Quality and Testing of Drinking Water Sources by FTKs for 5 women, Self Help Group Involvement, Record Keeping-Meeting minutes, cash book, connection register, Billing register, Water resource mapping exercise, Prachar Rath	Completed in 352 Villages
			PRA for Water Budgeting/Auditing	1750
			Pamphlets/Posters	1050
			Folk songs & Wall slogan writing	8750





Impact & Outcome

Access to reliable drinking water within household premises has significant benefits for rural populations, particularly women and girls. It can lead to improved health outcomes, enhance socioeconomic conditions, and reduce the physical burden on rural women and girls. The availability of clean water not only improves quality of life but also contributes to overall well-being and productivity within rural communities. SARDA has established:

1. More than 1750 women of 352 villages, have been identified and trained from every village for testing the water samples through Field Test Kits (FTKs) in Balaghat district of Madhya Pradesh.
2. 100% implementation of Village Water & Sanitation Committee (VWSC) or Pani Samiti with at least 50% women members and suitable representation to marginalized sections of society.
3. Conducted awareness programs through various mobilization activities, like, School rallies, Prachar Rath, Wall Slogan Writing, Pamphlets distribution, Wall posters, Flipbook distribution, Street play, and Folk Songs in all allotted 120 villages of the Simdega District & 352 Villages of Balaghat District.
4. Almost 90% of surveys have been completed for functional household tap connections (FHTC) in all of the 350 villages of the allotted district.





Bihar Skill Development Centre (BSDC)

The Bihar Skill Development Mission is a government initiative aimed at enhancing the employability of the youth in Bihar by providing skill development training programs. Through collaboration with various industries and training providers, the mission offers a range of courses tailored to meet the demands of the job market. By focusing on high-demand sectors such as IT and CS. The Bihar Skill Development Mission aims to bridge the gap between industry requirements and the skill sets of the youth, ultimately leading to sustainable employment opportunities. The primary roles of BSDM include establishing a wide network of training centers by the name of the “Kushal Yuva Program” for the youth and providing employment opportunities to the youth.



Currently, SARDA is managing the Bihar Skill Development Centre (BSDC) at the Giddhaur block in Jamui District, covering 40 villages from 8 Gram Panchayat. In FY 2023-24, out of a total of 244 skilled aspirants, most of them received jobs, and the remaining lot are aiming at higher studies.

JLG Project- NABARD

SARDA has been assigned the project by NABARD on “**Joint Liability Group Promotion- Sanction of Grant Assistance for Formation, Credit Linkage & thereafter repayment by 50 JLGs in DARI Block of Hazaribagh district of Jharkhand**”. Group promotion, Mobilization & credit linkage activities are in Process. Members of Active SHGs and FPOs are mobilized & promoted as JLG groups. Activities such as Mushroom Cultivation, Goatry, Piggery, and Vegetable Cultivation are identified to be taken up by these in the Dadi Block of Hazaribagh District, Jharkhand.

As of the current date, a total of 25 Joint Liability Groups (JLGs) have been financially supported. These groups play a crucial role in facilitating access to credit and financial services for individuals in need, particularly in rural areas. By providing a platform for collective lending and repayment, JLGs help empower members to pursue entrepreneurial endeavors and improve their livelihoods. The continued support of these groups is essential in fostering economic growth and development in our communities.

CAT- NABARD

The Capacity Building for Adoption of Technology Programme aims to address these challenges by providing training, resources, and support to farmers, agricultural workers, and other stakeholders. Through workshops, skill development programs, and partnerships with technology providers, NABARD is working to build the capacity of rural communities to effectively utilize technology in their agricultural practices.

By promoting the adoption of technology, NABARD is not only empowering rural communities but also helping to drive innovation and sustainability in the agriculture sector. With the support of this Programme, farmers can access important information, improve their agricultural techniques, and increase their productivity and income.



Overall Achievement of the Project: -

SARDA Organized a visit with 30 participants at CSK University in Palampur for the beneficiaries of the CAT Programme, implemented by SARDA at Mahapur block of Kathua District in Jammu. These individuals were actively involved in various dairy activities but lacked organization, leading to low yields. Following their visit, all the farmers expressed their willingness to utilize the knowledge gained during the training to enhance their dairy businesses, thereby ensuring better livelihoods.

After a comprehensive three-day training and exposure session, these individuals have not only acquired the necessary skills but also developed the capacity to effectively share their knowledge in Dairy Management. This transformative experience has not only empowered the farmers but also holds the promise of significantly improving the dairy industry in the region.



Sl.No	District	Block	Name of Panchayats	No. of villages	No. of Beneficiaries	Activity
	Kathua	Mahanpur	Athyalta, Hatli & Sawla	3	25	Promotion of Modern Dairy Technology



FSPF NABARD

The Farm Sector Promotion Fund (FSPF) is a program initiated by the National Bank for Agriculture and Rural Development (NABARD) to support and promote the growth of the farming sector in India. The main objective of the FSPF is to provide financial assistance and resources to farmers, agricultural businesses, and other stakeholders in the agricultural industry. Through this program, NABARD aims to empower farmers, enhance agricultural productivity, and promote sustainable agriculture practices for the overall development of rural India.

SARDA is implementing two projects supported under FSPF Scheme NABARD 1) "Promotion of cultivation of millets i.e. Sorghum and Pearl Millet along with intercrops, its value addition and silage preparation among farmers of Jakahnia block of Ghazipur District" & 2) "Support for Millet (Kodo -Kutaki) Value Chain to Promote Livelihood opportunity for Vulnerable Community of Bijadandi & Mawai Block of Mandla District".

The ongoing program overseen by SARDA is currently unfolding across three agriculture-centric villages situated in the Mardah and Jakahnia blocks of Gazipur District (UP), as well as in the Mawai and Bijadandi Blocks of Mandla District in (MP) with the active participation of 150 Progressive Farmers from each village. This initiative is structured around six primary strategic pillars, namely Climate, Water, Carbon, Nutrient, Energy, and Knowledge. These pillars encompass a spectrum of technological solutions, allowing for the customization of interventions to suit the specific requirements of Smart Farming. The primary aim of this endeavor is to enhance farmers' adaptive capabilities in the face of climate change through the implementation of climate-resilient agricultural practices.



Atal Bhujal Yojna, GSDA Amravati, Maharashtra

Atal Bhujal Yojana (Atal Jal) is a program to exhibit a model of sustainable groundwater management driven by community participation, to facilitate replication and scaling-up of such initiatives.

SARDA is currently executing the Atal Bhujal Yojana (Atal Jal) in the Warud and Morshi Blocks of the Amravati district in the state of Maharashtra. The primary objective of this assignment is to provide support services to GP & DPMU for the successful execution of GSDA-Atal-Jal Yojana. The specific objectives include compiling and sharing village-based groundwater data with district DPMU, organizing IEC and community mobilization activities to raise awareness about the scheme, enhancing the capacity of stakeholders to carry out tasks related to the scheme, developing and implementing Village wise Water Security Plans, and promoting efficient water use practices. These objectives aim to ensure the effective implementation of Atal-Jal and promote sustainable water management practices in the project areas.



id: 21.405183
loc: 76.227279
loc: 373.76226 m
loc: 3.0 m
loc: 63° (NE)
loc: 10.2° (S.97)
loc: 1-03-2024 09:41
loc: 76.227279



Project Profile

Name of the Major Activities	Name Of the Sub-Activities	Area Of Intervention (Name of The Blocks)	No. of GP & Village	Number Of Beneficiaries
IEC Activity	GP Meeting,	Warud & Morshi Taluka	48 GP & 107 Village	960
	Village Meeting			1200
	Mahila Sabha			720
	Gram Sabha			2400
	Prabhat Pheri			4800
	Collection of GP Resolution			48
	Collection of Baseline Data			48
	Door To Door Campaign			480
	Rangoli Competition			1100
	Mobile Van Campaign			2400
	Taluka & District workshop			250
	T-Shirt & Cap Distribution			1440
	Atal Samrudh Gram Competition			2800
	Water Saving Prayer			5000
	Study Tour			250
AG Activity	Farmer Camp	Warud & Morshi Taluka	48 GP & 107 Village	4143
	Millet Camp			3565
	WSP Updation			48
	Case Study			12
	Line Department Visit			55
	Cropping Seeds			48
WCS Activity	Drainage line survey	Warud & Morshi Taluka	48 GP & 107 Village	48
	Data collection Existing WCS work of Jalyukt Shivar Abhiyaan			48
	Canal irrigation from the line department			20
	Preparation of Demand & Supply side WCS worksheet			48
	Preparation of offline WSP with all details of WCS			48
	Recharge shaft Side Selection			338
	WSP Updation			48
GWS Activity	Well Inventory	Warud & Morshi Taluka	48 GP & 107 Village	9662
	Calculations of Well Inventory			107
	Well Schedule Sheets			107
	Draft Estimate Sheets			48
	Preparation of Offline WSP			48
	Survey on Atal Jal Mobile Apps			9662



Implementation & Management of Krishak Pathshala and Birsa Gram under Samekit Birsa Gram Vikash Yojana Sah Krishak Pathshala Yojana

The Samekit Birsa Gram Vikas Yojna Sah Krishak Pathsala Yojna aims to train farmers in the scientific methods of agriculture, animal husbandry, and fisheries through the Krishak Pathsala program, as well as provide services with the help of experts. In addition, the program focuses on coordinating efforts between the Department of Agriculture, Animal Husbandry, Cooperation, and other government departments to ensure targeted convergence of schemes. The initiative also supports providing input materials and facilities in cluster-based Birsa villages by collaborating with the relevant departments. Furthermore, it assists farmers in accessing markets, provides infrastructure for the storage of agricultural produce, and helps with the construction of necessary infrastructure in Birsa villages. The program also aims to raise awareness among farmers about various schemes offered by government departments and promote modern agricultural practices on a significant portion of available land to build confidence among nearby farmers.

SARDA is currently implementing a program in the Ramgarh District of Jharkhand to enhance the capacity of local farmers. This initiative carried out through Farmers School, focuses on providing farmers with skills in agriculture, animal husbandry, fisheries, piggery, and other related areas. By enhancing the skills and knowledge of farmers, the program seeks to increase their income and make them more employable in various sectors. This program is an important step towards empowering farmers and ensuring sustainable agricultural practices in the region.

Under this Scheme, emphasis will be placed on introducing advanced agricultural techniques, promoting the cultivation of horticultural crops, enhancing animal husbandry practices, and improving irrigation arrangements. These initiatives will be implemented in one agricultural farm in each district during the first phase of the scheme. Additionally, the scheme will also be developed in the form of Krishak Pathsala, aimed at educating and empowering farmers with the necessary knowledge and skills to improve their agricultural practices. Overall, this scheme signifies the government's commitment to enhancing the agricultural sector in Jharkhand and has the potential to bring about positive changes in the lives of farmers across the state.

Impact:

1. Completed Baseline Surveys of 750 Farmers.
2. Fencing Work has been completed in 20.67 Acres of allotted Land.
3. DPR Prepared
4. 2 DMCs have been Conducted
5. Construction of 1 Acre Pond
6. Horticulture Plantation in 2 Acre of Land
7. Construction of Training Hall
8. Construction of Piggery Shed.
9. District-level Kishan Mela has been Organized at Krishak Pathsala, Kaitha, Ramgarh (JH).





Resource Support Unit

Social Action for Rural Development (SARDA) has been relentlessly working on developmental issues since its inception in the year 2001, holds expertise in conducting Social Impact Assessments, Environmental Impact Assessments, Social Impact Studies, Asset valuation, R&R studies, technical assistance in the land acquisition process, Forest Development Agencies (FDA) Evaluation, Preparation of DPR, Micro Plan for Joint Forest Management Areas, PRA exercise, Baseline Survey and Research & Planning Services. SARDA has been providing its technical expertise in planning and research work to various clients including Central and State Governments and independent Agencies in 8 states of India (Jharkhand, Bihar, Madhya Pradesh, Odisha, Chhattisgarh, Uttar Pradesh, Maharashtra, and Jammu & Kashmir).



Major assignments undertaken during the FY 2023-24 are:

1. PMU under DMFT

With the Agreement between SARDA and the respective District Deputy Commissioner, SARDA is providing consulting services for establishing and running a “**Project Monitoring Unit (PMU) under DMFT**” in Dumka and Chatra District. The PMU will serve as a ‘nodal point’ of the District Mineral Foundation and will work under the overall guidance of the Deputy Commissioner and technical direction of the Deputy Development Commissioner as well as the officer-in-charge assigned for DMFT. Further, PMU will also facilitate the functioning of the Managing Committee of the DMF.

The DMFT aims to channel the funds collected into the mining-affected regions to improve the quality of life of the affected persons. This will include access to safe drinking water, healthcare, education, skill development, welfare of women and children, and the welfare of old age and disabled persons

2. BLSES/ R&R planning & Implementation of Western Coalfield Limited (WCL) sites:

- i. BLSES/SIAS of project affected area, preparation of rehabilitation & resettlement plan / Social Impact management plan & facilitation in implementation of R&R Action Plan/ Social Impact Management plan in respect of URDHAN village Tehsil- PARASIA, Dist.- Chhindwara for Urdhan Village – Urdhan Opencast Mine of **Pench Area** of W.C.L
 - ii. Baseline socio-economic survey (BLSES) of project affected area, preparation of rehabilitation/ resettlement action plan & facilitation in implementation of proposed rehabilitation /resettlement of UKANI village Tehsil- WANI, Dist.- Yavatmal for Ukani Village –Neeljai Expansion Deep opencast mine of **Wani Area**.
 - iii. Base Line Socio-Economic Survey (BLSES)/ Social Impact Assessment Studies (SIAS) of Project Affected Area, Preparation and getting approved Rehabilitation & Resettlement Action Plan/ Social Impact Management Plan from District Rehabilitation & Resettlement Committee and Facilitation in Implementation of Rehabilitation & Resettlement Action Plan/Social Impact Management Plan in Respect of **Ukni Deep OCM of Wani North Area** of WCL”, Maharashtra.
 - iv. Base Line Socio-Economic Survey (BLSES) of Project Affected Area, Preparation and getting approved Rehabilitation & Resettlement Action Plan and Facilitation In Implementation Of proposed Rehabilitation & Resettlement Action Plan on turnkey basis for Kotodi & Yerandgaon village of Tahsil- Saoner at **Adasa U/G to OC Mine of Nagpur Area**.
 - v. Appointment of NGO to conduct the BLSES & RAP preparation work of Piraya village Tah. Bhiwapar, Distt. Nagpur consisting of approximately 960 families is to be rehabilitated for Gokul Opencast of Western Coalfields Ltd. **Umrer Area, Nagpur**.
 - vi. Appointment of NGO to conduct the BLSES & RAP preparation work of Shirpur village, Distt. Nagpur consisting of approximately 495 families is to be rehabilitated for MKD-1, Opencast of Western Coalfields Ltd. **Umrer Area, Nagpur**
- ### 3. Consultancy services to Central Mine Planning and Design Institute Limited (CMPDI) & Mahanadi Coalfields Limited (MCL) for Environmental Baseline Data collection /generation and analysis of various samples of Group-II (Flora and Fauna Survey) & Group III (Socio-Economic Study)”.





- i. Baseline Survey of SES and Flora & Fauna Survey at various sites of Mahanadi Coal Limited in Jharsuguda, Odisha.
- ii. Base Line Data Generation for Group –III (SES) & Group II (FF Study) Of Cluster VIII of BCCL, Dhanbad, Jharkhand
4. Consultancy services for conducting a Social Impact Assessment Study in the State of **Odisha**. SARDA as an empanelled SIA agency for the state of ODISHA completed the following SIA in the FY 2023-24
 - i. Social Impact Assessment Study for Acquisition of 155.6250 Acres of Private Land from four Villages under Chandbali Tahasil of Bhadrak District for “Establishment of Dhamara Port Industrial Park “.
 - ii. Social Impact Assessment Study for Acquisition of 0.32 Acre of Private Land from Pitagaon Village under Gurundia Tahasil of Sundergarh District for “Construction of HL Bridge over river Brahmani at 6.028 km from NH-23 to Ravanjhola road under PMGSY Scheme.
 - iii. Social Impact Assessment Study for Acquisition of 15.49 Acres of Private Land from Jabaguda village under Kodinga Tahasil of Nabarangapur District for Construction of Jabaguda MIP.
 - iv. SIA Study for Acquisition of 467.2100 acres of Private Land from Village Mirigadiakandha under Kujang Tahasil of Jagatsinghpur District for “Establishment of Petrochemical complex by JV of Govt. of Odisha.”
 - v. SIA study for Acquisition of 1281.3480 acres of Private land from six villages under Mahakalpada Tahsil of Kendrapara District for “Establishment of Industry for 24 MTPA Integrated Steel Plant by M/s Arcelor Mittal Nippon Steel India Ltd (TOR35-0001)”
5. Consultancy services for conducting a Social Impact Assessment Study in the State of **Jharkhand**. SARDA as an empanelled SIA agency for the state of Jharkhand completed the following SIA in the FY 2023-24
 - i. SES/SIA of the PAFs of Chandragupta OCP of CCL, Hazaribagh.
 - ii. SIA of the PAFs of Pachwara North Coal Block of WBPDCCL, Dumka.
 - iii. SIA for PAFs of TASRA Open Cast Project of SAIL, Dhanbad.
 - iv. Resettlement & Rehabilitation (R&R) study of the PAFs of Chilgo Village of Pachwara North Coal Block of WBPDCCL, Dumka.
6. Consultancy Services for conducting a Social Impact Assessment Study in the State of **Uttar Pradesh**. SARDA is doing an SIA study for the Land Acquisition for Solid Waste Management project in Gorakhpur, UP.
7. Consultancy Services for Asset Survey & Valuation of 500 PAFs of Pachwara South Coal Block, of M/s Neyvelli Uttar Pradesh Power Ltd (NUUPL) Lignite C, Limited, Dumka Jharkhand.
8. Consultancy Services for preparation of BLSES / Asset valuation, R&R planning of PAFs of Brinda Sisai Coal Block of Dalmiya Cement Bharat Limited (DCBL) Chatra & Hazaribagh Jharkhand.
9. Prepared the Detailed Project Report (DPR) for SLWM, Zila Parishad, Nagpur, and Gondia District of Maharashtra.
10. Prepared the detailed Project Report of PMKSY 2.0 works in Nawadih Block of Bokaro District. DPR was prepared for the Watershed Management Program for holistic development of the Area to Increase Ground Water Table, Crop Intensity, etc.
11. SARDA is also providing its Consultancy Services to various District & State Governments for conducting Third Party Evaluation of the Govt. schemes and programs.
 - i. SARDA is providing consultancy services to the Forest Department, Govt. of Jharkhand for “**Third Party Evaluation of works undertaken under Plan Scheme in Jharkhand for the year 2020-21, 2021-22 & 2022-23**”
 - ii. SARDA is also providing consultancy services to the Forest Department, Govt. of Madhya Pradesh for “**Third Party evaluation of works done under Madhya Pradesh Compensatory Afforestation Fund Management and Planning Authority (State CAMPA) in the Year, 2020-21, 2021-22 & 2022-23**”.
12. SARDA in support of NDDDB, Jharkhand provided Inhouse Training cum Capacity Building and Exposure Visit of Honey Bee Practicing Farmers in the Nawadih Area of Bokaro, Jharkhand. A total of 26 Farmers from 8 GP benefitted.
13. **PRI Training, Department of Panchayati Raj, Govt. of Jharkhand.**

With the support of the Panchayati Raj Department, Government of Jharkhand, SARDA is conducting training for PRI members to enhance their capacity and skills by organizing training sessions, workshops, and skill-building activities. In FY 2023-24, SARDA has trained 1396 PRI members in the 6 blocks of Jamtara District of Jharkhand.
14. **Village Development Plan**



Pradhan Mantri Adi Adarsh Gram Yojna (PMAAGY) aims to transform villages with significant tribal populations into model villages. Under PMAAGY, SARDA provided consultancy services to ITDA, Ranchi, Govt. of Jharkhand for the preparation of Village Development Plan for selected 37 villages from 3 blocks of Ranchi District, Jharkhand.

CSR Unit Lead Projects

1. Bharat India Jodo- BIJ 0.3, “Resilient Communities, Mandla- A Reliance Foundation Project

Reliance Foundation’s Flagship Programme, Bharat-India-Jodo 3.0, implemented by SARDA aims at bridging the developmental gap between rural and urban India. This initiative, dedicated to rural transformation, specifically targets small and marginal farmers struggling with limited livelihood options. These farmers, predominantly owning rain-fed lands, face challenges such as insufficient irrigation facilities and reliance on single crops. As a result, they often cannot utilize their entire landholdings due to poor soil quality or inadequate resources. Consequently, their income potential is significantly restricted, compelling many to migrate in search of unskilled labor opportunities. Through RF BIJ 3.0, SARDA is facilitating these farmers to receive support to enhance their agricultural practices and diversify their income sources, ultimately guiding them towards sustainable livelihoods.

In the current socio-economic environment, the RF BIJ 3.0 Project plays a crucial role in uplifting marginal farmers by promoting sustainable livelihood practices. SARDA aims to reduce the risks associated with farming, lessen external dependencies, and enhance the lives and livelihoods of rural communities. By emphasizing low-cost, high-output sustainable agriculture techniques, by implementing the RF BIJ 3.0 project in the Mandla district, SARDA helps farmers boost their productivity and capitalize on market opportunities to increase their income.

Moreover, the program fosters collaboration among farmers by organizing them into collectives, enabling them to benefit from the strength of unity. These innovative models of social and economic development are community-driven, ensuring that the development initiatives are owned, controlled, and managed by the local communities themselves. This approach not only benefits the individual beneficiaries but also contributes to the overall advancement of the village and region.

By promoting self-reliance, enhancing productivity, and fostering community collaboration, SARDA is paving the way for a more prosperous and sustainable future for farmers and rural regions.



Project Profile

Sl.No	PROJECT OUTPUTS ACHIEVED AS PER MOU	ACHIEVED
1	Villages initiated climate resilience measures and integrated them into village/Gram Panchayat Development Plan	23
2	Villages conducted a participatory assessment of common resources and created a management plan	32
3	Additional water harvesting capacity created (IN lakh CUM)	5.33 lakh cubic meter
4	The area brought under the efficient management of water	256.48 ha
5	Area covered with conservation and restoration of resources	167.42 ha
6	Villages with improved access to drinking water	15
7	Households engaged in Grey Water Management	396 HH



Sl.No	PROJECT OUTPUTS ACHIEVED AS PER MOU	ACHIEVED
8	The area brought under climate adaptive farming practices (soil fertility improvement, resistant seed, intercrop, trap crops, and INM)	772.53 Ha
9	Households with diversified food production and consumption	872 HH
10	Area covered under nutrition-rich and bio-fortified crops	24.80 Ha
11	The area under improved production practices/new agriculture technologies	785 Ha
12	Farmers adopting and benefiting from Climate Resilient and/or productivity	1709 HH
13	Farmer collectives (FPOs/ SHG Federations/Co-op/ PACS/ Informal group of farmers) provided techno-managerial support and/or linkages	6
14	Producers benefitting from marketing their produce / accessing products and services from Farmer Collectives	655
15	Value of produce marketed and inputs/services sourced through farmer collectives (IN Crore)	1.528 Cr
16	No. of SHGs/ Producer Groups / Collectives (Men & Women) engaged for income enhancement	125
17	Persons supported to improve existing livelihood / Persons supported in taking up additional livelihood in the Farm & Non-Farm Sector	1201
18	Improved access to entitlements, schemes, and financial products for financial inclusion	1191
19	Women with improved digital and financial literacy engaged in livelihood activities	1262

2. Promoting Clean Cooking through the Distribution of ICS to 8300 Beneficiaries, supported by Schaeffler India Limited.

SARDA is implementing the “Promoting clean cooking through improved cookstoves” project supported by **Schaeffler India Limited** in the Chhatarpur District of Madhya Pradesh. The project aims to introduce improved cookstoves, for creating a healthier environment and addresses the issue of traditional chulha contributing to indoor pollution, respiratory illnesses, and forest degradation, making it imperative for sustainable cooking practices. The objectives include mitigating health issues associated with traditional chulha, preventing ecosystem damage, generating employment, and aligning with the fulfillment of eight Sustainable Development Goals (SDGs). The project spans five years. A total of 8300 cookstoves are planned to be distributed, benefiting a total of 8300 families. In conclusion, Improved Cookstoves offer a holistic solution, enhancing efficiency, health, and environmental sustainability in cooking practices worldwide. The widespread adoption of Improved Cookstoves reduces the reliance on traditional cooking methods that contribute to deforestation and environmental degradation and minimizes the environmental impact of cooking activities while fostering a long-term commitment to sustainable practices.

3. Promotion of Bamboo Plantation based Agroforestry cum Horticulture in MP, CG, JH, and Maharashtra in collaboration with Kosher Climate India Pvt. Limited.

SARDA in collaboration with Kosher Climate India Pvt. Limited is working on a “Climate restoration and Climate resilience” project in selected pockets in Madhya Pradesh, Chhattisgarh, Jharkhand, and Maharashtra. The wider objective of the proposed project is to develop an ecosystem that could ensure zero carbon release in our country. Other Specific Objectives of the proposed intervention are the following:

1. To ensure bamboo plantation-based agro-forestry on 6000 ha of land within 3 years.
2. To ensure community engagement in the promotion and protection of plantation works.
3. To enhance the capacity of the project area community for efficient management of natural resources
4. To transform barren or waste and non-fertile land of the tribal people into productive land

After the implementation of project activities, 6000 ha of land will be covered with a bamboo plantation comprising different States. The local community will also ensure ownership of the patches of the plantation and will ensure the sustainability of the plantation activity.





SARDA's Initiatives

SARDA is committed to socio-economic upliftment for marginalized people through the promotion of NRM-based livelihood activities. SARDA strongly believes that sustainable growth in agriculture can be possible with the introduction of a scientific approach and technology mixed with the recognition of indigenous knowledge. Also, it aims to improve the quality of life in rural areas by working with rural community groups to unveil and support the potentials and opportunities amidst them.

- SARDA Mushroom Spawn Centre (SMSC)

Mushroom Production is a viable alternative option for marginalized and vulnerable sections with minimum input and less labor. SARDA is facilitating the Institutionalized livelihood promotion among SHG women through Mushroom Production for their Socio-Economic upliftment. Mushroom Cultivation requires adaptation of technology application and scientific approach which requires training and supply of inputs. For this, SARDA has established a **SARDA Mushroom Spawn Centre (SMSC)** at Ramgarh to ensure a regular supply of Spawn to the women folk and make the maximum profitability out of the Mushroom Production business.

- SARDA Agro Tourism Centre (SATC)

Intending to promote the adaptation of technology applications in livelihood promotion, SARDA has set up SARDA Agro Tourism Centre (SATC) as a training cum demonstration site or Tourist Visiting Centre in the HARRNALA village of Balaghat district in Madhya Pradesh. The center is adjacent to Kanha National Park. The center provides theoretical and practical knowledge regarding different NRM-based activities. This center is being promoted with the exhibition of different practices of organic farming, vegetable cultivation (3-tier system), Hi-tech Nursery, Vermicompost production, Dairy, Goatry, Fishery, Duckery, Soil, and Water Conservation, Lac Promotion, Biogas Unit for cooking and lighting, Food Processing center, etc. The center is having full residential facilities with refreshment facilities, training halls, cottages, mud houses, etc.

- SARDA INSTITUTE OF VILLAGE MANAGEMENT (SIVM)

The social development sector is facing a huge crisis of committed, dedicated, and enthusiastic professionals who can contribute effectively to the upliftment and betterment of society, right from the grassroots level. Considering the urgent need Social Action for Rural Development (SARDA) has set up a rural management institute i.e. SARDA Institute of Village Management (SIVM).

SARDA Institute of Rural Management offers the best facilities to its students including the best Faculty for the course of Rural Management.

- Classrooms with all modern facilities.
- Conference hall

- Well equipped Library with a Computer lab.
- Indoor refreshment/ recreation room
- Hostel facility for both boys and girls.

- SARDA GIS CELL

For extension of outreach and enhancement of performance, adaptation of new technologies in the development sector is mandatory. SARDA is always ahead in its thoughts and has always been at the frontline for utilizing the use of new technology in the field of Rural Development. With this vision, SARDA has established a GIS cell that comprises technical and management personnel with extensive expertise in IT, GIS, and CAD technologies, capable of delivering quality services in the areas of Image processing and Analysis, Data Conversion, Document Archival and Management, and other IT related Application.

Tasks accomplished by SARDA GIS Cell:

1. Cadastral Sheet Georeferencing, Digitization and Attribution of 2 Villages under Hemara WDF of Gaya, Bihar
2. Cadastral Sheet Georeferencing, Digitization and Attribution of 4 Villages under Jogernala WDF of Mirzapur, Uttar Pradesh
3. Location and Toposheet Map Composition of 2 Villages under Sukhalkhad WDF of Kathua, Jammu & Kashmir
4. Land Use and Land Cover Map Composition of the entire block of Kirnapur and Lanji, Madhya Pradesh
5. 20 No.'s of LU/LC, Slope, Soil, W/S, and Drainage Map Composition for Nawada Evaluation Work
6. Block-wise Panchayat Map of entire blocks of Balaghat, Madhya Pradesh under JJM Program
7. 30 No.'s of Location Map Composition of several areas of Jharkhand, Bihar, Maharashtra, Madhya Pradesh and Chhattisgarh

- SARDA Multi Training CENTRE

SARDA has its own well-equipped Training Centre at **Ramgarh (Jharkhand) and Nagpur (Maharashtra)** to carry out training on different skills. The training center has the entire basic infrastructure along with the residential facilities. During the year, the centre supports in execution of different training and exposure activities for different projects of our organization and other organizations too. The Training Infrastructure includes Lac research center demonstration sites, on-field Training, Training research materials, etc. Different training subjects Covered here include:

- Lac Cultivation and Processing
- SHG Modules
- Soil Conservation Activities
- Water Conservation Activities
- Vermi Compost
- Agriculture
- SRI and SWI
- Handicraft
- Watershed Promotion
- Horticulture Promotion, etc.



OUR supporters

- NABARD RO Lucknow (UP), Ranchi (JH), Pune (MS), Bhopal (MP), Patna (BR), Jammu (J&K)
- District Administration of different districts of Jharkhand, Bihar, MP, Maharashtra, Odisha and Chhattisgarh
- Forest Department of Jharkhand, Bihar, MP, Maharashtra and Chhattisgarh.
- State Level Nodal Agency Jharkhand, Maharashtra
- Bihar Watershed Development Agency, Bihar
- Jharkhand State Livelihood Promotion Society, Ranchi, Jharkhand
- Department of Rural Development-Jharkhand, Bihar, MP and Maharashtra
- District Water and Sanitation Society (Gondia, Nagpur, Balaghat, Korba, Simdega)
- Power Finance Corporation Consulting Limited (PFCCL)
- Jindal Steel Power Limited
- Central Mine Planning and Design Institute Ranchi, Bilaspur, Dhanbad, Asansol, Nagpur, Bhubaneswar, Singrauli
- National Thermal Power Corporation
- Punjab National Bank
- Development Commissioner (Handicrafts), Ministry of Textiles, Govt. of India
- Urban Local Body: Dhanbad, Ranchi, Khunti, Jamshedpur, Adityapur, Mango, Saraikela & Chaibasa
- TERI University
- Jharkhand State Scheduled Caste Cooperative Development Corporation, Ranchi
- Jharkhand State Tribal Cooperative Development Corporation, Ranchi
- Oil and Natural Gas Corporation
- ADANI Foundation
- Reliance Foundation
- Directorate of Statistics and Economics, Government of Maharashtra
- District Mineral Fund Trust, Korba- Chhattisgarh
- MP State Rural Livelihood Mission, Govt. of Madhya Pradesh
- Revenue & Land Reforms Department, Govt. of Jharkhand
- Land Acquisition Department of all Districts of Jharkhand
- Bihar Skill Development Mission, Govt. of Bihar
- NABFINS
- Western Coalfield Limited
- MECON Limited.
- Lal Bahadur Shastri National Academy of Administration, Mussoorie.
- Mahanadi Coalfields Limited
- Ministry of Water Resources, River Development and Ganga Rejuvenation, GoI.
- CSIR –NEERI, Nagpur
- Ministry of Jal Shakti
- Vidarbha Development Board, Nagpur
- District Mineral Fund, Sundergarh, Odisha
- SFAC, Government of India
- NDDDB, Govt. of India
- ATAL BHUJAL YOJANA, Maharashtra
- Jal Jeevan Mission
- NABCONS
- SBI General Insurance
- National Dairy Development Corporation
- Nabakrushna Chaudhary Centre for Development Studies (NCDS)
- Uttar Pradesh Cooperative Federation Limited (UP – PCF)



Our Recognition

- SARDA is an ISO 9001:2015 certified Organization for its Quality Management System and has continuously received appreciation for its commendable work. SARDA has been recently awarded for:
 - a) Zee Business National CSR Leadership.
 - b) Certificate of Merit at 8th Edition of World CSR Day.
 - c) Outstanding performance in the development sector by Global Achievers Foundation.
 - d) Best NGO working for Soil & Water conservation and Management in Jharkhand by CSR World Day.
 - e) Promotion of the Best JLG & Best SHG in Bihar for 2014-15 by NABARD RO Patna.
- SARDA is empaneled with State and National Level Agencies on various categories for its competency and expertise in relevant fields. SARDA is empaneled with:
 1. Directorate of Economics and Revenue, Govt. of Maharashtra for conducting Evaluation Studies, sample surveys, and providing Expert Services in economic and Statistical activities of Govt. of Maharashtra
 2. Ministry of Water Resources, River Development and Ganga Rejuvenation, GoI as Lead Agency for East India Zone under National Water Mission.
 3. Chhattisgarh Bio Diversity Board, Govt. of Chhattisgarh for Bio-Diversity Conservation Initiatives in Chhattisgarh.
 4. Rural Development Department (Panchayati Raj), Govt. of Jharkhand for carrying out Capacity Building and other relevant works for Panchayati Raj
 5. National Highway Authority of India (NHAI) for Plantation along highways.
 6. Power Finance Corporation Consulting Limited (PFCCCL) for conducting Economic Studies/Social Impact Assessments/Corporate Social Responsibility Plans/ Rehabilitation & Resettlement plans, studies related to Forest and Forest clearances, Conducting Public Hearings, Surveys and Land acquisition and SIA Study for Coal Blocks.
 7. Atal Bihari Vajpayee Institute of Good Governance and Policy Analysis for Market Research & Survey Agencies for Data Collection (Qualitative & Quantitative) in Madhya Pradesh for Studies taken up by AIGGPA, Bhopal.
 8. Bihar State Biodiversity Board for forest, forestry & Environment related works.
 9. Village Social Transformation Foundation (VSTF), Maharashtra for Village Planning.
 10. Vidarbha Irrigation Development Corporation, Govt. of Maharashtra for Proof Consultancy Services for the projects under PMKSY in for Formation and Capacity Building of Water User Association
 11. Revenue and Land Reforms Department, Govt. of Jharkhand for carrying out Social Impact Assessment of Land Acquisition in Jharkhand
 12. Tata Institute of Social Science for carrying our CSR Projects under the National CSR Hub
 13. Bihar Watershed Development Society, Govt. Of Bihar for Training and Capacity Building of Watershed Projects
 14. Forest Department, Chhattisgarh for Training and Capacity Building and preparation and implementation of Livelihood DPR of villages of Kanker Forest Division
 15. Urban Development & Housing Department, Govt. of Jharkhand as Resource Organization for carrying out different interventions in Jharkhand.
 16. Development Commissioner (Handicrafts), Ministry of Textiles, Govt. of India as the technical service provider for capacity building to Artisans.
 17. Ministry of Rural Development, Govt of India as PIA FOR implementation of SVEP.
 18. CSIR-NEERI under the Jagruti Programme for Water Literacy Programme and Science for Women Empowerment at Gram Panchayat Level for Sustainable Living.
 19. SFAC, Govt of India, as CSS and CBBOs for the Promotion of 10,000 FPOs
 20. NABARD as CBBO under CSS for the Promotion of 10,000 FPOs.
 21. Jal Jeevan Mission (JJM), Madhya Pradesh as Implementation Support Agency.
 22. Jal Jeevan Mission (JJM), Maharashtra as Implementation Support Agency.
 23. Jal Jeevan Mission (JJM), Jharkhand as Implementation Support Agency.
 24. Jal Jeevan Mission (JJM), Chhattisgarh as Implementation Support Agency.
 25. Jal Jeevan Mission (JJM), Uttar Pradesh as Implementation Support Agency.
 26. Empaneled with NABCON as a Consultancy Service Provider.
 27. GSDA under ATAL Bhujal Yojana Programme, Maharashtra, as Implementing Agency
 28. National Dairy Development Corporation (NDDB) for Promotion of FPOs.
 29. Nabakrushna Chaudhary Centre for Development Studies (NCDS) for conducting Socio-Economic Survey
 30. UP Cooperatives for Promotion and Formation of FPOs.
 31. Empaneled as Social Impact Assessment Agency with HIPA

OUR CORE COMPETENCIES AREA

- Tribal Development • Forest Development • Drinking Water & Sanitation • Agriculture Development • Handicraft & Rural Livelihood Promotion • Promotion of Renewable Energy Sources • Women Empowerment • Monitoring & Evaluation of Govt. Programmes • Community Based Natural Resource Management • Consultancy Services for Research Survey, Planning Documentation & DPR Preparation



Head Office:

SARDA Bhawan, Chhotki Murrām, Ward No. 5, Ramgarh Cantt., (JH). Pin-829122

✉ sardagroups@rediffmail.com, sardagroup01@yahoo.com, sardaamgoan@rediffmail.com 🌐 <https://sardaindia.org> 📞 9431146893

Regional Office:

Near Bajrang Rice Mill, Dr. Lohia Ward,
Kudwa, Dist- Gondia, Maharashtra-441614,
📞 7182251033

State Office Madhya Pradesh :

Sarda Agriculture & Tourism Center,
Harranala, Baihar. Balaghat - 481105,
📞 9404152076

State Office Bihar:

C/0 SARDA, Near Ramlakhan Market, Lal
Bahadur Shashtri Nagar, Patna - 800014,
Bihar 📞 9472752190

State Office Chhattisgarh :

C/o Dr Jaspal Jaswani. MIG 558
Veer Savarkar Nagar. Hirapur,
Raipur, Chhattisgarh. Pin 492099

SARDA Agro Tourism Centre :

Gram - Harranala, Block-Baihar
District- Balaghat (M.P.)
Pin-481105 📞 9404152076

RURAL DEVELOPMENT RESOURCE CENTRE (RDRC)

Gram -Wajbori, Katol Road, Block -Katol,
District- Nagpur, Maharashtra.
Pincode: 441302 📞 942393460